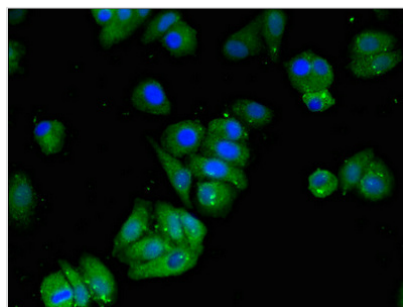




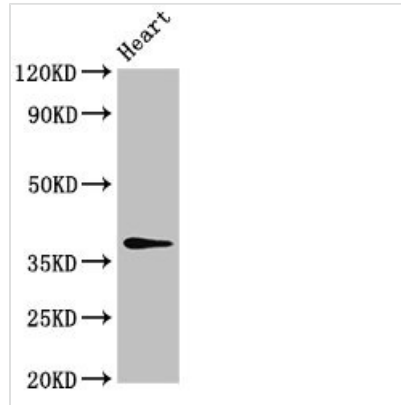
MAT2B Antibody

Product Code	CSB-PA882157LA01HU
Storage	Upon receipt, store at -20°C or -80°C. Avoid repeated freeze.
Uniprot No.	Q9NZL9
Immunogen	Recombinant Human Methionine adenosyltransferase 2 subunit beta protein (85-143AA)
Raised In	Rabbit
Species Reactivity	Human, Rat
Tested Applications	ELISA, WB, IF; Recommended dilution: WB:1:200-1:2000, IF:1:50-1:200
Form	Liquid
Conjugate	Non-conjugated
Storage Buffer	Preservative: 0.03% Proclin 300 Constituents: 50% Glycerol, 0.01M PBS, pH 7.4
Purification Method	>95%, Protein G purified
Isotype	IgG
Clonality	Polyclonal
Alias	Methionine adenosyltransferase 2 subunit beta (Methionine adenosyltransferase II beta) (MAT II beta) (Putative dTDP-4-keto-6-deoxy-D-glucose 4-reductase), MAT2B, TGR
Immunogen Species	Homo sapiens (Human)
Research Area	Others
Target Names	MAT2B

Image



Immunofluorescent analysis of HepG2 cells using CSB-PA882157LA01HU at dilution of 1:100 and Alexa Fluor 488-conjugated AffiniPure Goat Anti-Rabbit IgG(H+L)

**Western Blot**

Positive WB detected in: Rat heart tissue

All lanes: MAT2B antibody at 4 μ g/ml

Secondary

Goat polyclonal to rabbit IgG at 1/50000 dilution

Predicted band size: 38, 37, 29, 35, 10 kDa

Observed band size: 38 kDa

Usage

For Research Use Only. Not for use in diagnostic or therapeutic procedures.