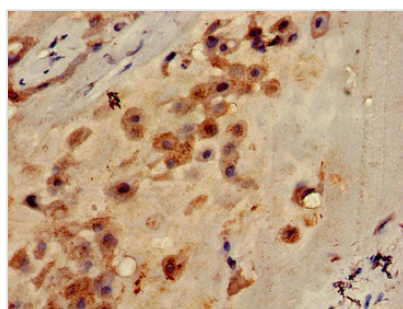




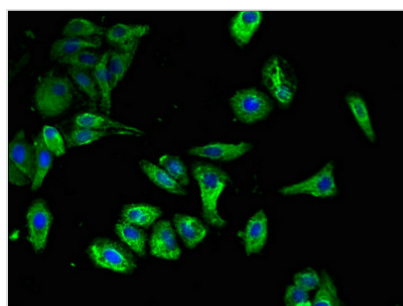
CLEC7A Antibody

Product Code	CSB-PA883623LA01HU
Storage	Upon receipt, store at -20°C or -80°C. Avoid repeated freeze.
Uniprot No.	Q9BXN2
Immunogen	Recombinant Human C-type lectin domain family 7 member A protein (1-44AA)
Raised In	Rabbit
Species Reactivity	Human
Tested Applications	ELISA, IHC, IF; Recommended dilution: IHC:1:20-1:200, IF:1:50-1:200
Form	Liquid
Conjugate	Non-conjugated
Storage Buffer	Preservative: 0.03% Proclin 300 Constituents: 50% Glycerol, 0.01M PBS, pH 7.4
Purification Method	>95%, Protein G purified
Isotype	IgG
Clonality	Polyclonal
Alias	C-type lectin domain family 7 member A (Beta-glucan receptor) (C-type lectin superfamily member 12) (Dendritic cell-associated C-type lectin 1) (DC-associated C-type lectin 1) (Dectin-1), CLEC7A, BGR CLECSF12 DECTIN1
Immunogen Species	Homo sapiens (Human)
Research Area	Immunology
Target Names	CLEC7A

Image



Immunohistochemistry of paraffin-embedded human placenta tissue using CSB-PA883623LA01HU at dilution of 1:100



Immunofluorescent analysis of HepG2 cells using CSB-PA883623LA01HU at dilution of 1:100 and Alexa Fluor 488-conjugated AffiniPure Goat Anti-Rabbit IgG(H+L)

