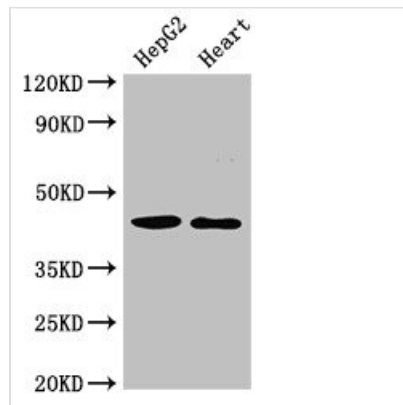




GULP1 Antibody

| | |
|----------------------------|---|
| Product Code | CSB-PA887007LA01HU |
| Storage | Upon receipt, store at -20°C or -80°C. Avoid repeated freeze. |
| Uniprot No. | Q9UBP9 |
| Immunogen | Recombinant Human PTB domain-containing engulfment adapter protein 1 protein (199-279AA) |
| Raised In | Rabbit |
| Species Reactivity | Human, Rat |
| Tested Applications | ELISA, WB, IF; Recommended dilution: WB:1:500-1:5000, IF:1:50-1:200 |
| Form | Liquid |
| Conjugate | Non-conjugated |
| Storage Buffer | Preservative: 0.03% Proclin 300 Constituents: 50% Glycerol, 0.01M PBS, pH 7.4 |
| Purification Method | >95%, Protein G purified |
| Isotype | IgG |
| Clonality | Polyclonal |
| Alias | PTB domain-containing engulfment adapter protein 1 (Cell death protein 6 homolog) (PTB domain adapter protein CED-6) (Protein GULP), GULP1, CED6 GULP |
| Immunogen Species | Homo sapiens (Human) |
| Research Area | Signal Transduction |
| Target Names | GULP1 |

Image



Western Blot

Positive WB detected in: HepG2 whole cell lysate, Rat heart tissue

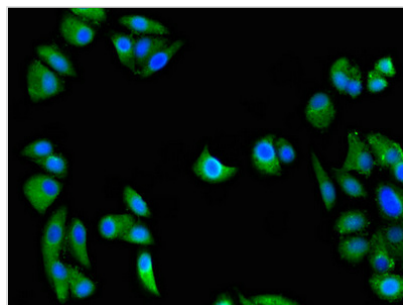
All lanes: GULP1 antibody at 2µg/ml

Secondary

Goat polyclonal to rabbit IgG at 1/50000 dilution

Predicted band size: 35, 20, 23, 34 kDa

Observed band size: 45 kDa



Immunofluorescent analysis of HepG2 cells using CSB-PA887007LA01HU at dilution of 1:100 and Alexa Fluor 488-conjugated AffiniPure Goat Anti-Rabbit IgG(H+L)