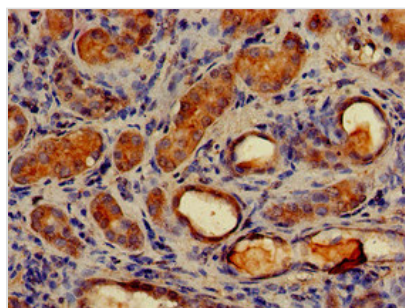




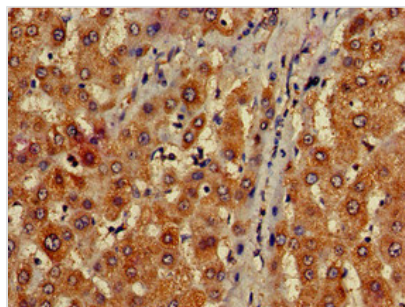
MAP1LC3C Antibody

Product Code	CSB-PA887153LA01HU
Storage	Upon receipt, store at -20°C or -80°C. Avoid repeated freeze.
Uniprot No.	Q9BXW4
Immunogen	Recombinant Human Microtubule-associated proteins 1A/1B light chain 3C protein (1-30AA)
Raised In	Rabbit
Species Reactivity	Human
Tested Applications	ELISA, IHC, IF; Recommended dilution: IHC:1:20-1:200, IF:1:50-1:200
Form	Liquid
Conjugate	Non-conjugated
Storage Buffer	Preservative: 0.03% Proclin 300 Constituents: 50% Glycerol, 0.01M PBS, pH 7.4
Purification Method	>95%, Protein G purified
Isotype	IgG
Clonality	Polyclonal
Alias	Microtubule-associated proteins 1A/1B light chain 3C (Autophagy-related protein LC3 C) (Autophagy-related ubiquitin-like modifier LC3 C) (MAP1 light chain 3-like protein 3) (MAP1A/MAP1B light chain 3 C) (MAP1A/MAP1B LC3 C) (Microtubule-associated protein 1 light chain 3 gamma), MAP1LC3C
Immunogen Species	Homo sapiens (Human)
Research Area	Signal Transduction
Target Names	MAP1LC3C

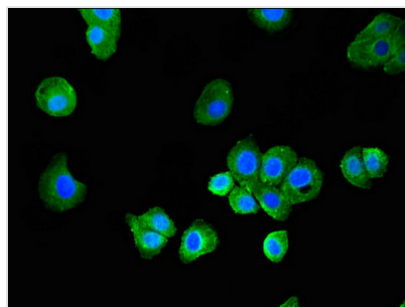
Image



Immunohistochemistry of paraffin-embedded human kidney tissue using CSB-PA887153LA01HU at dilution of 1:100



Immunohistochemistry of paraffin-embedded human liver tissue using CSB-PA887153LA01HU at dilution of 1:100



Immunofluorescent analysis of HepG2 cells using CSB-PA887153LA01HU at dilution of 1:100 and Alexa Fluor 488-conjugated AffiniPure Goat Anti-Rabbit IgG(H+L)

Usage

For Research Use Only. Not for use in diagnostic or therapeutic procedures.