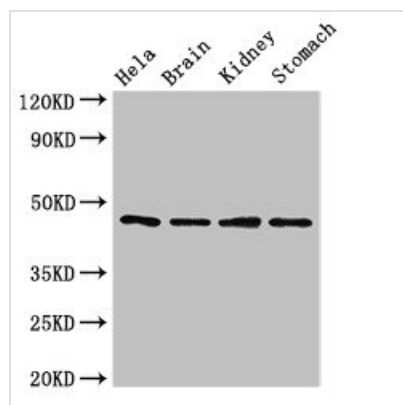




# NOB1 Antibody

<b>Product Code</b>	CSB-PA892472LA01HU
<b>Storage</b>	Upon receipt, store at -20°C or -80°C. Avoid repeated freeze.
<b>Uniprot No.</b>	Q9ULX3
<b>Immunogen</b>	Recombinant Human RNA-binding protein NOB1 protein (103-229AA)
<b>Raised In</b>	Rabbit
<b>Species Reactivity</b>	Human, Mouse
<b>Tested Applications</b>	ELISA, WB, IHC, IF; Recommended dilution: WB:1:500-1:5000, IHC:1:20-1:200, IF:1:50-1:200
<b>Form</b>	Liquid
<b>Conjugate</b>	Non-conjugated
<b>Storage Buffer</b>	Preservative: 0.03% Proclin 300 Constituents: 50% Glycerol, 0.01M PBS, pH 7.4
<b>Purification Method</b>	>95%, Protein G purified
<b>Isotype</b>	IgG
<b>Clonality</b>	Polyclonal
<b>Alias</b>	RNA-binding protein NOB1 (Phosphorylation regulatory protein HP-10) (Protein ART-4), NOB1, ART4 NOB1P PSMD8BP1
<b>Immunogen Species</b>	Homo sapiens (Human)
<b>Research Area</b>	Others
<b>Target Names</b>	NOB1

## Image



### Western Blot

Positive WB detected in: HeLa whole cell lysate, Mouse brain tissue, Mouse kidney tissue, Mouse stomach tissue

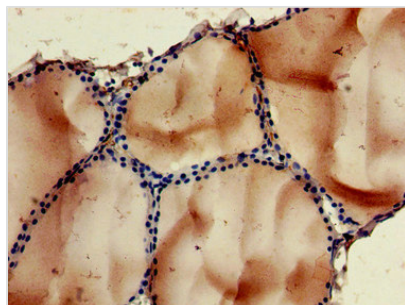
All lanes: NOB1 antibody at 1.5µg/ml

### Secondary

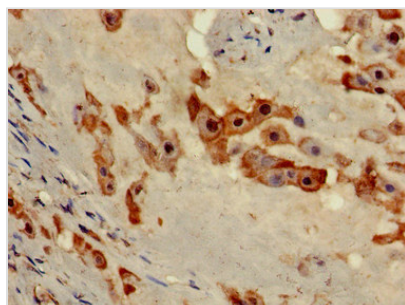
Goat polyclonal to rabbit IgG at 1/50000 dilution

Predicted band size: 47 kDa

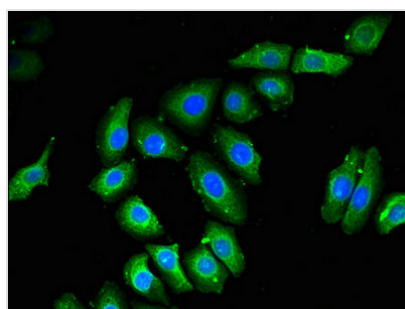
Observed band size: 47 kDa



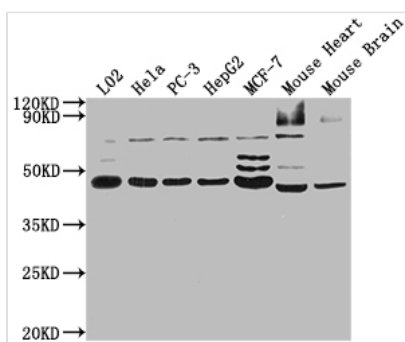
Immunohistochemistry of paraffin-embedded human thyroid tissue using CSB-PA892472LA01HU at dilution of 1:100



Immunohistochemistry of paraffin-embedded human placenta tissue using CSB-PA892472LA01HU at dilution of 1:100



Immunofluorescent analysis of A549 cells using CSB-PA892472LA01HU at dilution of 1:100 and Alexa Fluor 488-conjugated AffiniPure Goat Anti-Rabbit IgG(H+L)



**Western Blot**

Positive WB detected in: L02 whole cell lysate, HeLa whole cell lysate, PC-3 whole cell lysate, HepG2 whole cell lysate, MCF-7 whole cell lysate, Mouse Heart tissue, Mouse Brain tissue  
All lanes: NOB1 antibody at 1:2000

**Secondary**

Goat polyclonal to rabbit IgG at 1/50000 dilution  
Predicted band size: 47 kDa  
Observed band size: 47 kDa

**Usage**

For Research Use Only. Not for use in diagnostic or therapeutic procedures.