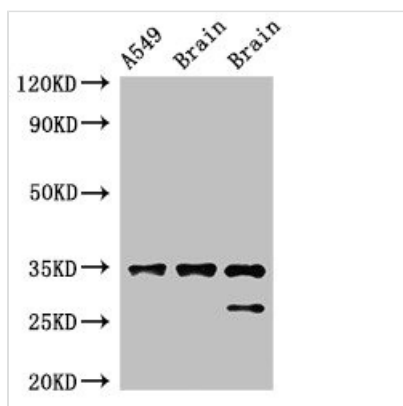




STUB1 Antibody

Product Code	CSB-PA892480LA01HU
Storage	Upon receipt, store at -20°C or -80°C. Avoid repeated freeze.
Uniprot No.	Q9UNE7
Immunogen	Recombinant Human E3 ubiquitin-protein ligase CHIP protein (1-48AA)
Raised In	Rabbit
Species Reactivity	Human, Mouse, Rat
Tested Applications	ELISA, WB, IHC, IF; Recommended dilution: WB:1:500-1:5000, IHC:1:20-1:200, IF:1:50-1:200
Form	Liquid
Conjugate	Non-conjugated
Storage Buffer	Preservative: 0.03% Proclin 300 Constituents: 50% Glycerol, 0.01M PBS, pH 7.4
Purification Method	>95%, Protein G purified
Isotype	IgG
Clonality	Polyclonal
Alias	E3 ubiquitin-protein ligase CHIP (EC 2.3.2.27) (Antigen NY-CO-7) (CLL-associated antigen KW-8) (Carboxy terminus of Hsp70-interacting protein) (RING-type E3 ubiquitin transferase CHIP) (STIP1 homology and U box-containing protein 1), STUB1, CHIP
Immunogen Species	Homo sapiens (Human)
Research Area	Signal Transduction
Target Names	STUB1

Image



Western Blot

Positive WB detected in: A549 whole cell lysate, Rat brain tissue, Mouse brain tissue

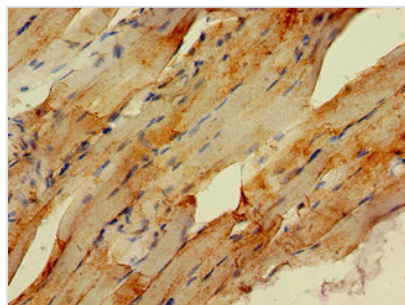
All lanes: STUB1 antibody at 2µg/ml

Secondary

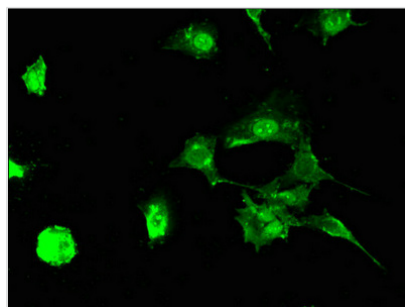
Goat polyclonal to rabbit IgG at 1/50000 dilution

Predicted band size: 35, 28 kDa

Observed band size: 35, 28 kDa



Immunohistochemistry of paraffin-embedded human skeletal muscle tissue using CSB-PA892480LA01HU at dilution of 1:100



Immunofluorescent analysis of MCF-7 cells using CSB-PA892480LA01HU at dilution of 1:100 and Alexa Fluor 488-conjugated AffiniPure Goat Anti-Rabbit IgG(H+L)

Usage

For Research Use Only. Not for use in diagnostic or therapeutic procedures.