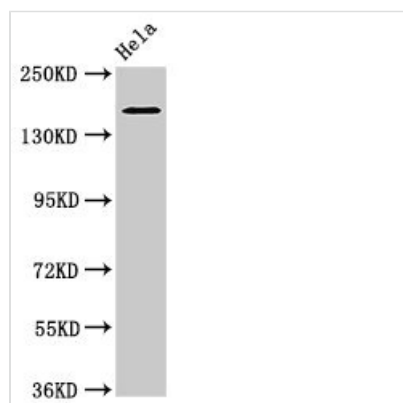




# ROBO1 Antibody

<b>Product Code</b>	CSB-PA896760LA01HU
<b>Storage</b>	Upon receipt, store at -20°C or -80°C. Avoid repeated freeze.
<b>Uniprot No.</b>	Q9Y6N7
<b>Immunogen</b>	Recombinant Human Roundabout homolog 1 protein (29-143AA)
<b>Raised In</b>	Rabbit
<b>Species Reactivity</b>	Human
<b>Tested Applications</b>	ELISA, WB, IF; Recommended dilution: WB:1:500-1:5000, IF:1:50-1:200
<b>Form</b>	Liquid
<b>Conjugate</b>	Non-conjugated
<b>Storage Buffer</b>	Preservative: 0.03% Proclin 300 Constituents: 50% Glycerol, 0.01M PBS, pH 7.4
<b>Purification Method</b>	>95%, Protein G purified
<b>Isotype</b>	IgG
<b>Clonality</b>	Polyclonal
<b>Alias</b>	Roundabout homolog 1 (Deleted in U twenty twenty) (H-Robo-1), ROBO1, DUTT1
<b>Immunogen Species</b>	Homo sapiens (Human)
<b>Research Area</b>	Neuroscience
<b>Target Names</b>	ROBO1

## Image



### Western Blot

Positive WB detected in: Hela whole cell lysate

All lanes: ROBO1 antibody at 3.2µg/ml

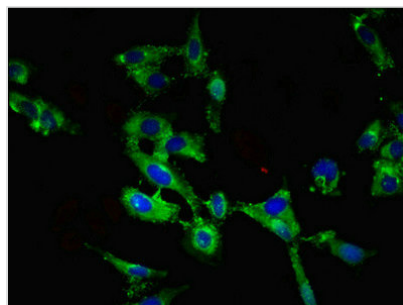
### Secondary

Goat polyclonal to rabbit IgG at 1/50000 dilution

Predicted band size: 181, 182, 177, 176, 170

kDa

Observed band size: 181 kDa



Immunofluorescent analysis of HeLa cells using CSB-PA896760LA01HU at dilution of 1:100 and Alexa Fluor 488-conjugated AffiniPure Goat Anti-Rabbit IgG(H+L)