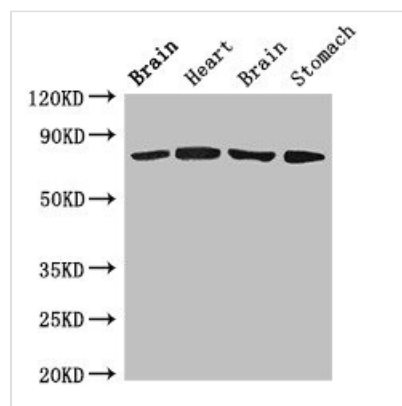




# SLCO1B1 Antibody

<b>Product Code</b>	CSB-PA896932LA01HU
<b>Storage</b>	Upon receipt, store at -20°C or -80°C. Avoid repeated freeze.
<b>Uniprot No.</b>	Q9Y6L6
<b>Immunogen</b>	Recombinant Human Solute carrier organic anion transporter family member 1B1 protein (426-537AA)
<b>Raised In</b>	Rabbit
<b>Species Reactivity</b>	Human, Mouse, Rat
<b>Tested Applications</b>	ELISA, WB, IHC; Recommended dilution: WB:1:500-1:5000, IHC:1:20-1:200
<b>Form</b>	Liquid
<b>Conjugate</b>	Non-conjugated
<b>Storage Buffer</b>	Preservative: 0.03% Proclin 300 Constituents: 50% Glycerol, 0.01M PBS, pH 7.4
<b>Purification Method</b>	>95%, Protein G purified
<b>Isotype</b>	IgG
<b>Clonality</b>	Polyclonal
<b>Alias</b>	Solute carrier organic anion transporter family member 1B1 (Liver-specific organic anion transporter 1) (LST-1) (OATP-C) (Sodium-independent organic anion-transporting polypeptide 2) (OATP-2) (Solute carrier family 21 member 6), SLCO1B1, LST1 OATP1B1 OATP2 OATPC SLC21A6
<b>Immunogen Species</b>	Homo sapiens (Human)
<b>Research Area</b>	Tags & Cell Markers
<b>Target Names</b>	SLCO1B1

## Image



### Western Blot

Positive WB detected in: Rat brain tissue, Rat heart tissue, Mouse brain tissue, Mouse stomach tissue

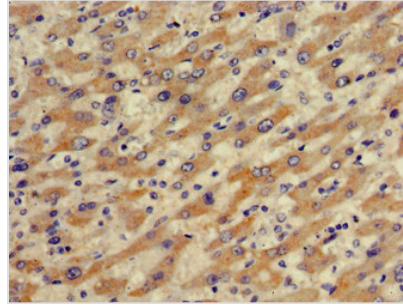
All lanes: SLCO1B1 antibody at 4µg/ml

Secondary

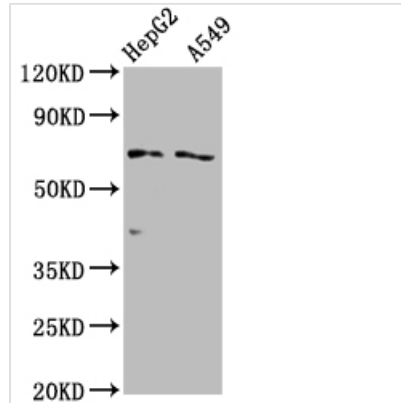
Goat polyclonal to rabbit IgG at 1/50000 dilution

Predicted band size: 77 kDa

Observed band size: 77 kDa



Immunohistochemistry of paraffin-embedded human liver cancer using CSB-PA896932LA01HU at dilution of 1:100

**Western Blot**

Positive WB detected in: HepG2 whole cell lysate, A549 whole cell lysate

All lanes: SLCO1B1 antibody at 1:2000

Secondary

Goat polyclonal to rabbit IgG at 1/50000 dilution

Predicted band size: 77 kDa

Observed band size: 77 kDa

**Usage**

For Research Use Only. Not for use in diagnostic or therapeutic procedures.