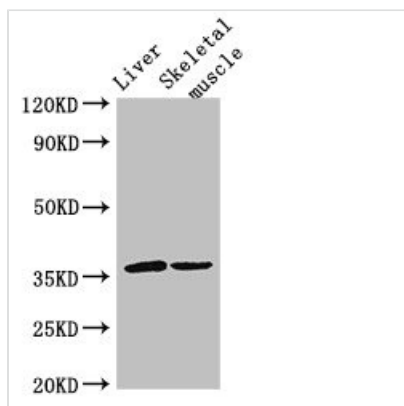




LYVE1 Antibody

Product Code	CSB-PA897574EA01HU
Storage	Upon receipt, store at -20°C or -80°C. Avoid repeated freeze.
Uniprot No.	Q9Y5Y7
Immunogen	Recombinant Human Lymphatic vessel endothelial hyaluronic acid receptor 1 protein (20-238AA)
Raised In	Rabbit
Species Reactivity	Human, Mouse
Tested Applications	ELISA, WB, IHC, IF; Recommended dilution: WB:1:500-1:5000, IHC:1:20-1:200, IF:1:50-1:200
Form	Liquid
Conjugate	Non-conjugated
Storage Buffer	Preservative: 0.03% Proclin 300 Constituents: 50% Glycerol, 0.01M PBS, pH 7.4
Purification Method	>95%, Protein G purified
Isotype	IgG
Clonality	Polyclonal
Alias	Lymphatic vessel endothelial hyaluronic acid receptor 1 (LYVE-1) (Cell surface retention sequence-binding protein 1) (CRSBP-1) (Extracellular link domain-containing protein 1) (Hyaluronic acid receptor), LYVE1, CRSBP1 HAR XLKD1
Immunogen Species	Homo sapiens (Human)
Research Area	Cardiovascular
Target Names	LYVE1

Image



Western Blot

Positive WB detected in: Mouse liver tissue,

Mouse skeletal muscle tissue

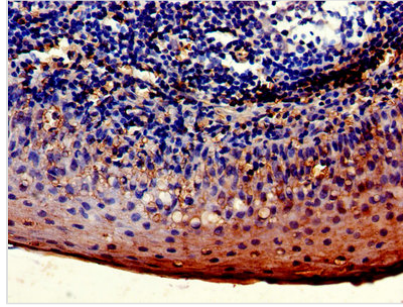
All lanes: LYVE1 antibody at 3µg/ml

Secondary

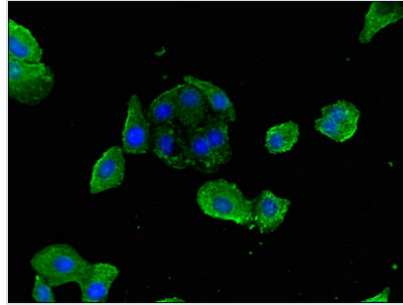
Goat polyclonal to rabbit IgG at 1/50000 dilution

Predicted band size: 36 kDa

Observed band size: 36 kDa



Immunohistochemistry of paraffin-embedded human tonsil tissue using CSB-PA897574EA01HU at dilution of 1:100



Immunofluorescence staining of HepG2 cells with CSB-PA897574EA01HU at 1:200, counter-stained with DAPI. The cells were fixed in 4% formaldehyde, permeabilized using 0.2% Triton X-100 and blocked in 10% normal Goat Serum. The cells were then incubated with the antibody overnight at 4°C. The secondary antibody was Alexa Fluor 488-conjugated AffiniPure Goat Anti-Rabbit IgG(H+L).

Usage

For Research Use Only. Not for use in diagnostic or therapeutic procedures.