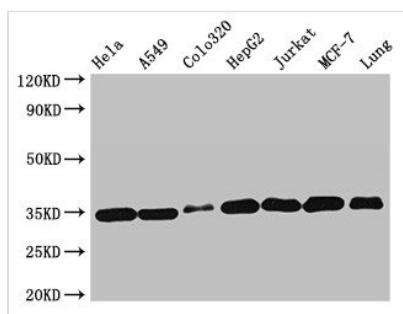




EMD Antibody

Product Code	CSB-PA007633LA01HU
Storage	Upon receipt, store at -20°C or -80°C. Avoid repeated freeze.
Uniprot No.	P50402
Immunogen	Recombinant Human Emerin protein (1-222AA)
Raised In	Rabbit
Species Reactivity	Human, Mouse
Tested Applications	ELISA, WB, IHC, IF, IP; Recommended dilution: WB:1:500-1:5000, IHC:1:20-1:200, IF:1:50-1:200, IP:1:200-1:2000
Form	Liquid
Conjugate	Non-conjugated
Storage Buffer	Preservative: 0.03% Proclin 300 Constituents: 50% Glycerol, 0.01M PBS, pH 7.4
Purification Method	>95%, Protein G purified
Isotype	IgG
Clonality	Polyclonal
Alias	Emerin, EMD, EDMD STA
Immunogen Species	Homo sapiens (Human)
Research Area	Signal Transduction
Target Names	EMD

Image



Western Blot

Positive WB detected in: HeLa whole cell lysate, A549 whole cell lysate, Colo320 whole cell lysate, HepG2 whole cell lysate, Jurkat whole cell lysate, MCF-7 whole cell lysate, Mouse lung tissue

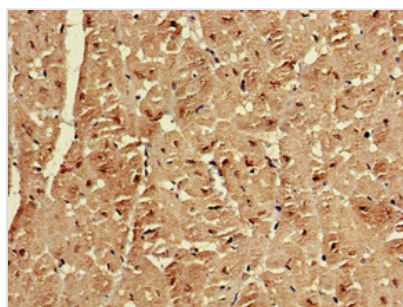
All lanes: EMD antibody at 2µg/ml

Secondary

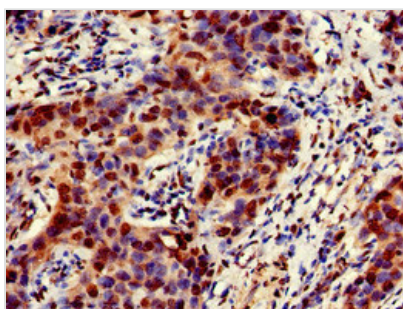
Goat polyclonal to rabbit IgG at 1/50000 dilution

Predicted band size: 29 kDa

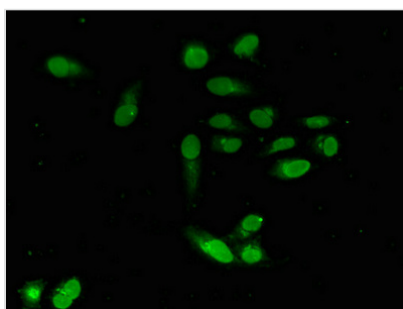
Observed band size: 35 kDa



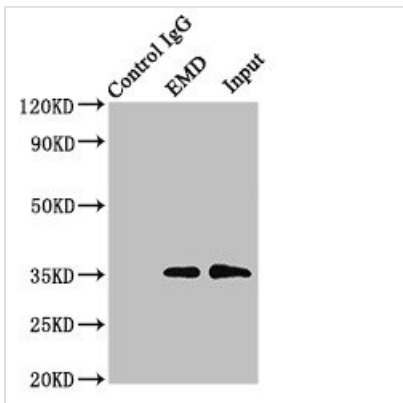
Immunohistochemistry of paraffin-embedded human heart tissue using CSB-PA007633LA01HU at dilution of 1:100



Immunohistochemistry of paraffin-embedded human bladder cancer using CSB-PA007633LA01HU at dilution of 1:100



Immunofluorescent analysis of HeLa cells using CSB-PA007633LA01HU at dilution of 1:100 and Alexa Fluor 488-conjugated AffiniPure Goat Anti-Rabbit IgG(H+L)



Immunoprecipitating EMD in HeLa whole cell lysate
 Lane 1: Rabbit control IgG instead of (1µg) instead of CSB-PA007633LA01HU in HeLa whole cell lysate. For western blotting, a HRP-conjugated Protein G antibody was used as the secondary antibody (1/2000)
 Lane 2: CSB-PA007633LA01HU (8µg) + HeLa whole cell lysate (500µg)
 Lane 3: HeLa whole cell lysate (10µg)

Usage

For Research Use Only. Not for use in diagnostic or therapeutic procedures.