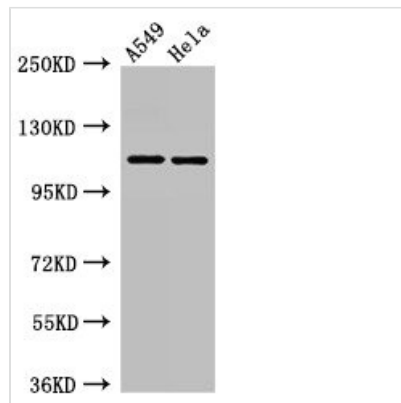




EPHA5 Antibody

Product Code	CSB-PA007725LA01HU
Storage	Upon receipt, store at -20°C or -80°C. Avoid repeated freeze.
Uniprot No.	P54756
Immunogen	Recombinant Human Ephrin type-A receptor 5 protein (246-514AA)
Raised In	Rabbit
Species Reactivity	Human
Tested Applications	ELISA, WB, IHC, IF; Recommended dilution: WB:1:500-1:5000, IHC:1:20-1:200, IF:1:50-1:200
Form	Liquid
Conjugate	Non-conjugated
Storage Buffer	Preservative: 0.03% Proclin 300 Constituents: 50% Glycerol, 0.01M PBS, pH 7.4
Purification Method	>95%, Protein G purified
Isotype	IgG
Clonality	Polyclonal
Alias	Ephrin type-A receptor 5 (EC 2.7.10.1) (Brain-specific kinase) (EPH homology kinase 1) (EHK-1) (EPH-like kinase 7) (EK7) (hEK7), EPHA5, BSK EHK1 HEK7 TYRO4
Immunogen Species	Homo sapiens (Human)
Research Area	Cardiovascular
Target Names	EPHA5

Image



Western Blot

Positive WB detected in: A549 whole cell lysate, HeLa whole cell lysate

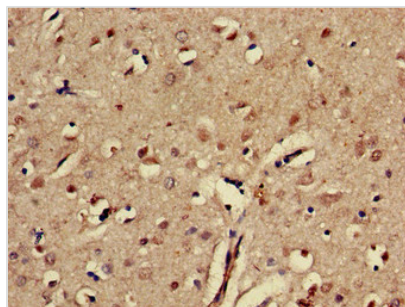
All lanes: EPHA5 antibody at 3µg/ml

Secondary

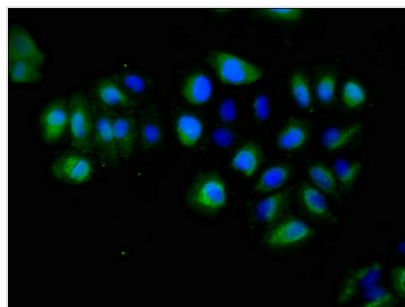
Goat polyclonal to rabbit IgG at 1/50000 dilution

Predicted band size: 115, 113, 108 kDa

Observed band size: 115 kDa



Immunohistochemistry of paraffin-embedded human brain tissue using CSB-PA007725LA01HU at dilution of 1:100



Immunofluorescent analysis of A549 cells using CSB-PA007725LA01HU at dilution of 1:100 and Alexa Fluor 488-conjugated AffiniPure Goat Anti-Rabbit IgG(H+L)