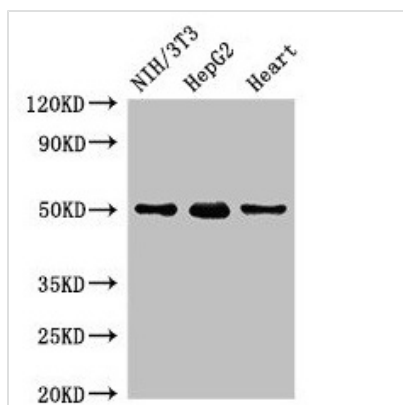




GCM2 Antibody

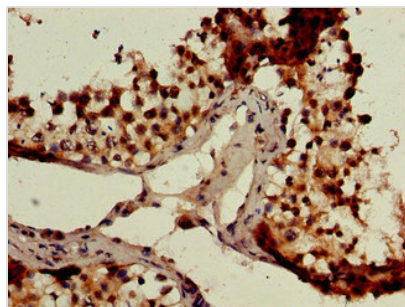
Product Code	CSB-PA009324LA01HU
Storage	Upon receipt, store at -20°C or -80°C. Avoid repeated freeze.
Uniprot No.	O75603
Immunogen	Recombinant Human Chorion-specific transcription factor GCMb protein (156-451AA)
Raised In	Rabbit
Species Reactivity	Human, Rat
Tested Applications	ELISA, WB, IHC; Recommended dilution: WB:1:500-1:5000, IHC:1:20-1:200
Form	Liquid
Conjugate	Non-conjugated
Storage Buffer	Preservative: 0.03% Proclin 300 Constituents: 50% Glycerol, 0.01M PBS, pH 7.4
Purification Method	>95%, Protein G purified
Isotype	IgG
Clonality	Polyclonal
Alias	Chorion-specific transcription factor GCMb (hGCMb) (GCM motif protein 2) (Glial cells missing homolog 2), GCM2, GCMB
Immunogen Species	Homo sapiens (Human)
Research Area	Stem Cells
Target Names	GCM2

Image

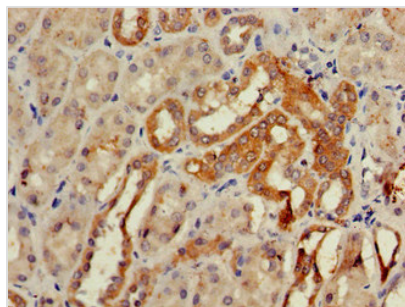


Western Blot

Positive WB detected in: NIH/3T3 whole cell lysate, HepG2 whole cell lysate, Rat heart tissue
 All lanes: GCM2 antibody at 2µg/ml
 Secondary
 Goat polyclonal to rabbit IgG at 1/50000 dilution
 Predicted band size: 57 kDa
 Observed band size: 50 kDa



Immunohistochemistry of paraffin-embedded human testis tissue using CSB-PA009324LA01HU at dilution of 1:100



Immunohistochemistry of paraffin-embedded human kidney tissue using CSB-PA009324LA01HU at dilution of 1:100

Usage

For Research Use Only. Not for use in diagnostic or therapeutic procedures.