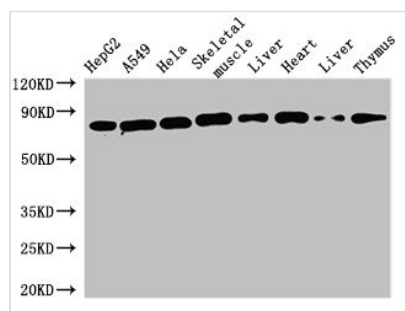




SKIL Antibody

Product Code	CSB-PA021357LA01HU
Storage	Upon receipt, store at -20°C or -80°C. Avoid repeated freeze.
Uniprot No.	P12757
Immunogen	Recombinant Human Ski-like protein (359-579AA)
Raised In	Rabbit
Species Reactivity	Human, Mouse, Rat
Tested Applications	ELISA, WB, IHC, IF; Recommended dilution: WB:1:500-1:5000, IHC:1:20-1:200, IF:1:50-1:200
Form	Liquid
Conjugate	Non-conjugated
Storage Buffer	Preservative: 0.03% Proclin 300 Constituents: 50% Glycerol, 0.01M PBS, pH 7.4
Purification Method	>95%, Protein G purified
Isotype	IgG
Clonality	Polyclonal
Alias	Ski-like protein (Ski-related oncogene) (Ski-related protein), SKIL, SNO
Immunogen Species	Homo sapiens (Human)
Research Area	Epigenetics and Nuclear Signaling
Target Names	SKIL

Image



Western Blot

Positive WB detected in: HepG2 whole cell lysate, A549 whole cell lysate, HeLa whole cell lysate, Mouse skeletal muscle tissue, Mouse liver tissue, Rat heart tissue, Rat liver tissue, Rat thymus tissue

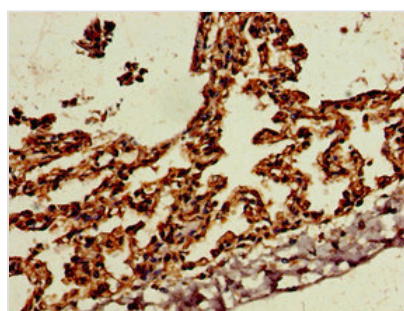
All lanes: SKIL antibody at 1.6µg/ml

Secondary

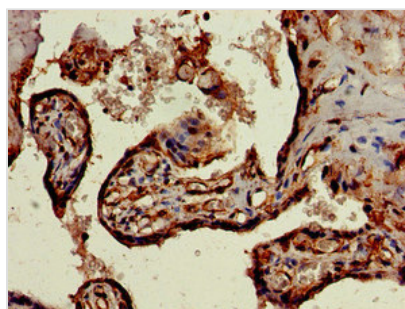
Goat polyclonal to rabbit IgG at 1/50000 dilution

Predicted band size: 77, 47, 72, 45, 75 kDa

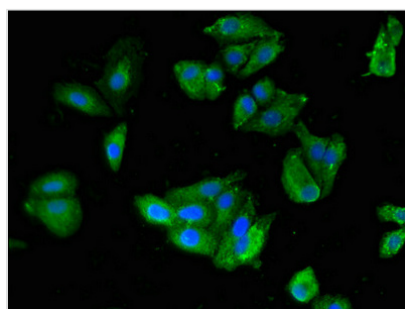
Observed band size: 77 kDa



Immunohistochemistry of paraffin-embedded human lung tissue using CSB-PA021357LA01HU at dilution of 1:100



Immunohistochemistry of paraffin-embedded human placenta tissue using CSB-PA021357LA01HU at dilution of 1:100



Immunofluorescent analysis of HepG2 cells using CSB-PA021357LA01HU at dilution of 1:100 and Alexa Fluor 488-conjugated AffiniPure Goat Anti-Rabbit IgG(H+L)

Usage

For Research Use Only. Not for use in diagnostic or therapeutic procedures.