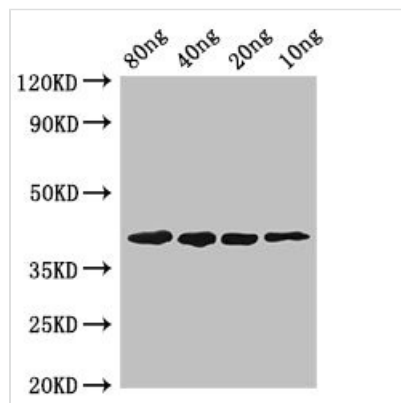




pepF Antibody

Product Code	CSB-PA346917LA01MLW
Storage	Upon receipt, store at -20°C or -80°C. Avoid repeated freeze.
Uniprot No.	P54125
Immunogen	Recombinant Mycoplasma pneumoniae Oligoendopeptidase F homolog protein (1-210AA)
Raised In	Rabbit
Species Reactivity	Mycoplasma pneumoniae
Tested Applications	ELISA, WB; Recommended dilution: WB:1:500-1:5000
Form	Liquid
Conjugate	Non-conjugated
Storage Buffer	Preservative: 0.03% Proclin 300 Constituents: 50% Glycerol, 0.01M PBS, pH 7.4
Purification Method	>95%, Protein G purified
Isotype	IgG
Clonality	Polyclonal
Alias	Oligoendopeptidase F homolog (EC 3.4.24.-), pepF
Immunogen Species	Mycoplasma pneumoniae
Research Area	Others
Target Names	pepF

Image



Western Blot

Positive WB detected in Recombinant protein

All lanes: pepF antibody at 2.8µg/ml

Secondary

Goat polyclonal to rabbit IgG at 1/50000 dilution

predicted band size: 40 kDa

observed band size: 40 kDa

Usage

For Research Use Only. Not for use in diagnostic or therapeutic procedures.