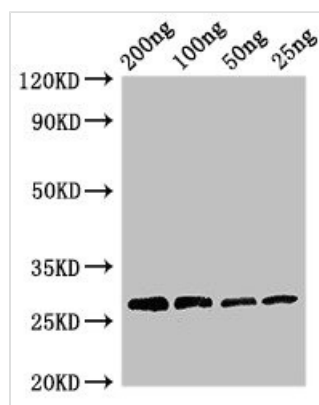




Papain Antibody

Product Code	CSB-PA365471LA01DQH
Storage	Upon receipt, store at -20°C or -80°C. Avoid repeated freeze.
Uniprot No.	P00784
Immunogen	Recombinant Carica papaya Papain protein (134-345AA)
Raised In	Rabbit
Species Reactivity	Carica papaya
Tested Applications	ELISA, WB; Recommended dilution: WB:1:500-1:5000
Form	Liquid
Conjugate	Non-conjugated
Storage Buffer	Preservative: 0.03% Proclin 300 Constituents: 50% Glycerol, 0.01M PBS, pH 7.4
Purification Method	>95%, Protein G purified
Isotype	IgG
Clonality	Polyclonal
Alias	Papain (EC 3.4.22.2) (Papaya proteinase I) (PPI) (allergen Car p 1)
Immunogen Species	Carica papaya
Research Area	Cell Biology

Image



Western Blot

Positive WB detected in Recombinant protein

All lanes: Papain antibody at 3µg/ml

Secondary

Goat polyclonal to rabbit IgG at 1/50000 dilution

predicted band size: 27 kDa

observed band size: 27 kDa

Usage

For Research Use Only. Not for use in diagnostic or therapeutic procedures.