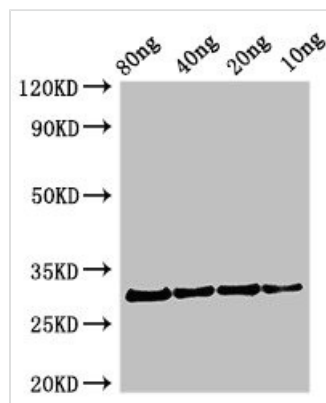




Profilin Antibody

Product Code	CSB-PA525079HA01MQZ
Storage	Upon receipt, store at -20°C or -80°C. Avoid repeated freeze.
Uniprot No.	O49894
Immunogen	Recombinant Mercurialis annua Profilin protein (1-133AA)
Raised In	Rabbit
Species Reactivity	Mercurialis annua
Tested Applications	ELISA, WB; Recommended dilution: WB:1:500-1:5000
Form	Liquid
Conjugate	Non-conjugated
Storage Buffer	Preservative: 0.03% Proclin 300 Constituents: 50% Glycerol, 0.01M PBS, pH 7.4
Purification Method	>95%, Protein G purified
Isotype	IgG
Clonality	Polyclonal
Alias	Profilin (Pollen allergen Mer a 1) (allergen Mer a 1)
Immunogen Species	Mercurialis annua
Research Area	Others

Image



Western Blot

Positive WB detected in Recombinant protein

All lanes: Profilin antibody at 2.7µg/ml

Secondary

Goat polyclonal to rabbit IgG at 1/50000 dilution

Predicted band size: 31 kDa

Observed band size: 31 kDa

Usage

For Research Use Only. Not for use in diagnostic or therapeutic procedures.