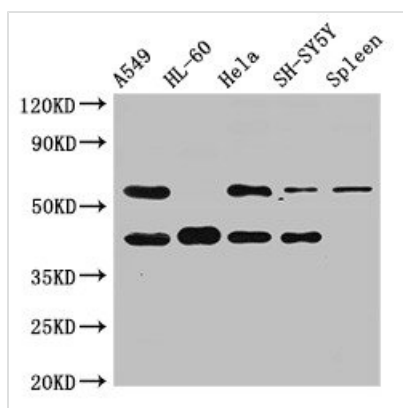




BACE2 Antibody

| | |
|----------------------------|--|
| Product Code | CSB-PA896746LA01HU |
| Storage | Upon receipt, store at -20°C or -80°C. Avoid repeated freeze. |
| Uniprot No. | Q9Y5Z0 |
| Immunogen | Recombinant Human Beta-secretase 2 protein (84-157AA) |
| Raised In | Rabbit |
| Species Reactivity | Human, Rat |
| Tested Applications | ELISA, WB, IHC, IF; Recommended dilution: WB:1:500-1:5000, IHC:1:20-1:200, IF:1:50-1:200 |
| Form | Liquid |
| Conjugate | Non-conjugated |
| Storage Buffer | Preservative: 0.03% Proclin 300 Constituents: 50% Glycerol, 0.01M PBS, pH 7.4 |
| Purification Method | >95%, Protein G purified |
| Isotype | IgG |
| Clonality | Polyclonal |
| Alias | Beta-secretase 2 (EC 3.4.23.45) (Aspartic-like protease 56 kDa) (Aspartyl protease 1) (ASP1) (Asp 1) (Beta-site amyloid precursor protein cleaving enzyme 2) (Beta-site APP cleaving enzyme 2) (Down region aspartic protease) (DRAP) (Memapsin-1) (Membrane-associated aspartic protease 1) (Theta-secretase), BACE2, AEPLC ALP56 ASP21 |
| Immunogen Species | Homo sapiens (Human) |
| Research Area | Neuroscience |
| Target Names | BACE2 |

Image

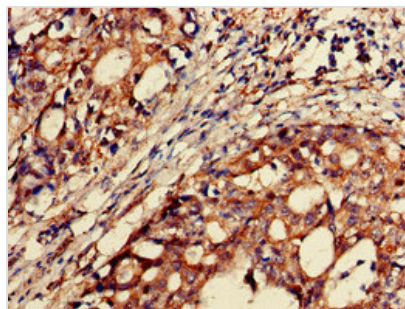


Western Blot

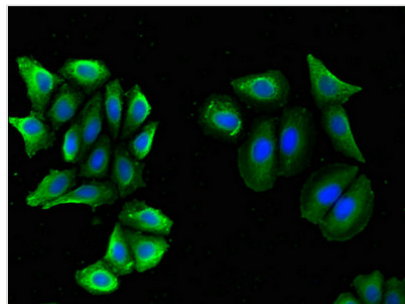
Positive WB detected in: A549 whole cell lysate, HL60 whole cell lysate, HeLa whole cell lysate, SH-SY5Y whole cell lysate, Rat spleen tissue
All lanes: BACE2 antibody at 2.5µg/ml

Secondary

Goat polyclonal to rabbit IgG at 1/50000 dilution
Predicted band size: 57, 51, 43, 39, 47 kDa
Observed band size: 57, 43 kDa



Immunohistochemistry of paraffin-embedded human gastric cancer using CSB-PA896746LA01HU at dilution of 1:100



Immunofluorescent analysis of A549 cells using CSB-PA896746LA01HU at dilution of 1:100 and Alexa Fluor 488-conjugated AffiniPure Goat Anti-Rabbit IgG(H+L)

Usage

For Research Use Only. Not for use in diagnostic or therapeutic procedures.