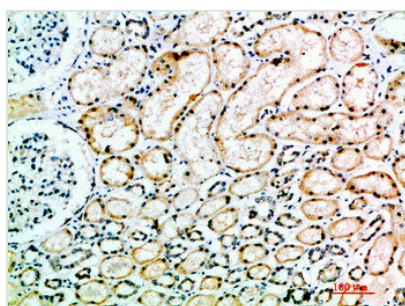




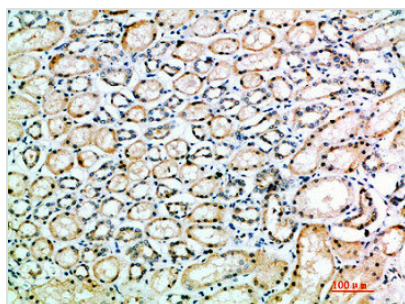
ACE Antibody

Product Code	CSB-PA794185
Storage	Upon receipt, store at -20°C or -80°C. Avoid repeated freeze.
Uniprot No.	P12821
Immunogen	Synthetic peptide from Human protein at AA range: 41-90
Raised In	Rabbit
Species Reactivity	Human, Mouse
Tested Applications	IHC, ELISA; IHC: 1:50-300, ELISA: 1:10000-20000
Form	Liquid
Conjugate	Non-conjugated
Storage Buffer	Liquid in PBS containing 50% glycerol, 0.5% BSA and 0.02% sodium azide.
Purification Method	The antibody was affinity-purified from rabbit serum by affinity-chromatography using specific immunogen.
Alias	Angiotensin-converting enzyme (ACE) (EC 3.2.1.-) (EC 3.4.15.1) (Dipeptidyl carboxypeptidase I) (Kininase II) (CD antigen CD143) [Cleaved into: Angiotensin-converting enzyme, soluble form]
Immunogen Species	Homo sapiens (Human)
Target Names	ACE

Image



Immunohistochemical analysis of paraffin-embedded human-kidney, antibody was diluted at 1:200



Immunohistochemical analysis of paraffin-embedded human-kidney, antibody was diluted at 1:200

Usage

For Research Use Only. Not for use in diagnostic or therapeutic procedures.