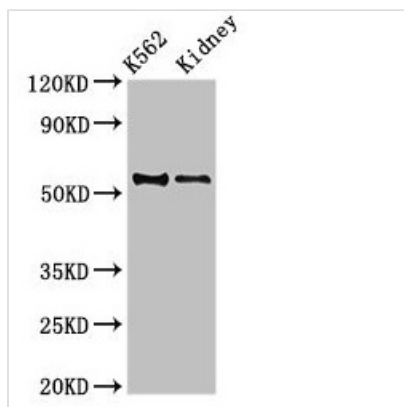




ALDH1A2 Antibody

Product Code	CSB-PA001566EA01HU
Storage	Upon receipt, store at -20°C or -80°C. Avoid repeated freeze.
Uniprot No.	O94788
Immunogen	Recombinant Human Retinal dehydrogenase 2 protein (1-518AA)
Raised In	Rabbit
Species Reactivity	Human, Mouse
Tested Applications	ELISA, WB, IHC; Recommended dilution: WB:1:500-1:5000, IHC:1:20-1:200
Form	Liquid
Conjugate	Non-conjugated
Storage Buffer	Preservative: 0.03% Proclin 300 Constituents: 50% Glycerol, 0.01M PBS, pH 7.4
Purification Method	>95%, Protein G purified
Isotype	IgG
Clonality	Polyclonal
Alias	Retinal dehydrogenase 2 (RALDH 2) (RALDH2) (EC 1.2.1.36) (Aldehyde dehydrogenase family 1 member A2) (Retinaldehyde-specific dehydrogenase type 2) (RALDH(II)), ALDH1A2, RALDH2
Immunogen Species	Homo sapiens (Human)
Research Area	Neuroscience
Target Names	ALDH1A2

Image



Western Blot

Positive WB detected in: K562 whole cell lysate, Mouse kidney tissue

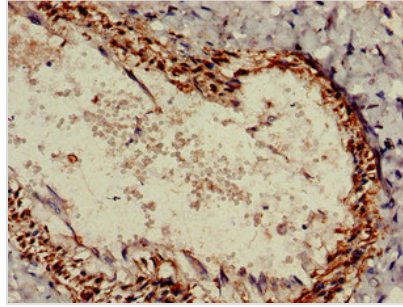
All lanes: ALDH1A2 antibody at 3.5µg/ml

Secondary

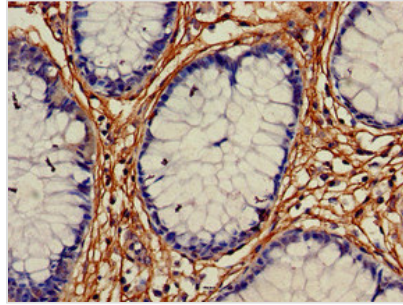
Goat polyclonal to rabbit IgG at 1/50000 dilution

Predicted band size: 57, 54, 55, 47 kDa

Observed band size: 54 kDa



Immunohistochemistry of paraffin-embedded human lung tissue using CSB-PA001566EA01HU at dilution of 1:100



Immunohistochemistry of paraffin-embedded human colon cancer using CSB-PA001566EA01HU at dilution of 1:100

Usage

For Research Use Only. Not for use in diagnostic or therapeutic procedures.