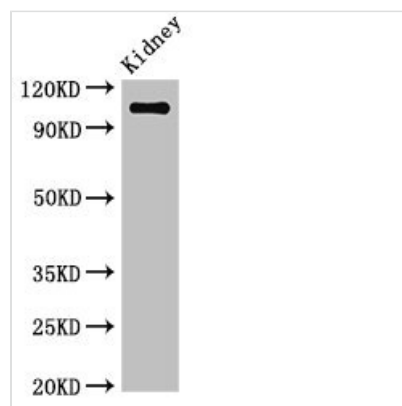




ANPEP Antibody

Product Code	CSB-PA001827LA01HU
Storage	Upon receipt, store at -20°C or -80°C. Avoid repeated freeze.
Uniprot No.	P15144
Immunogen	Recombinant Human Aminopeptidase N protein (34-219AA)
Raised In	Rabbit
Species Reactivity	Human, Mouse
Tested Applications	ELISA, WB, IHC, IF; Recommended dilution: WB:1:500-1:5000, IHC:1:20-1:200, IF:1:50-1:200
Form	Liquid
Conjugate	Non-conjugated
Storage Buffer	Preservative: 0.03% Proclin 300 Constituents: 50% Glycerol, 0.01M PBS, pH 7.4
Purification Method	>95%, Protein G purified
Isotype	IgG
Clonality	Polyclonal
Alias	Aminopeptidase N (AP-N) (hAPN) (EC 3.4.11.2) (Alanyl aminopeptidase) (Aminopeptidase M) (AP-M) (Microsomal aminopeptidase) (Myeloid plasma membrane glycoprotein CD13) (gp150) (CD antigen CD13), ANPEP, APN CD13 PEPN
Immunogen Species	Homo sapiens (Human)
Research Area	Immunology
Target Names	ANPEP

Image



Western Blot

Positive WB detected in: Mouse kidney tissue

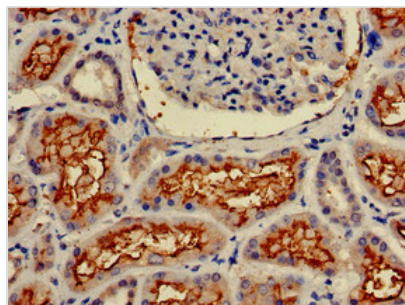
All lanes: ANPEP antibody at 3.4µg/ml

Secondary

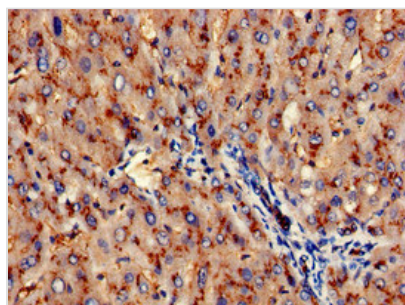
Goat polyclonal to rabbit IgG at 1/50000 dilution

Predicted band size: 110 kDa

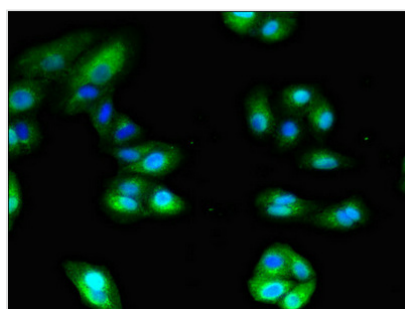
Observed band size: 110 kDa



Immunohistochemistry of paraffin-embedded human kidney tissue using CSB-PA001827LA01HU at dilution of 1:100



Immunohistochemistry of paraffin-embedded human liver tissue using CSB-PA001827LA01HU at dilution of 1:100



Immunofluorescent analysis of HepG2 cells using CSB-PA001827LA01HU at dilution of 1:100 and Alexa Fluor 488-conjugated AffiniPure Goat Anti-Rabbit IgG(H+L)

Usage

For Research Use Only. Not for use in diagnostic or therapeutic procedures.