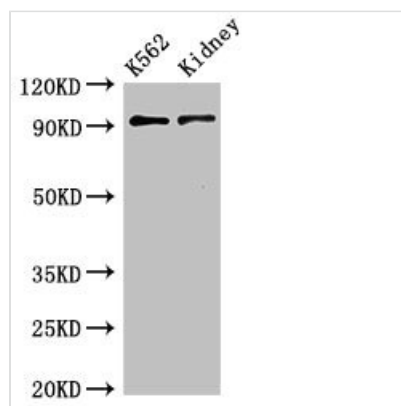




# AP1G1 Antibody

<b>Product Code</b>	CSB-PA001861LA01HU
<b>Storage</b>	Upon receipt, store at -20°C or -80°C. Avoid repeated freeze.
<b>Uniprot No.</b>	O43747
<b>Immunogen</b>	Recombinant Human AP-1 complex subunit gamma-1 protein (592-686AA)
<b>Raised In</b>	Rabbit
<b>Species Reactivity</b>	Human, Mouse
<b>Tested Applications</b>	ELISA, WB, IHC, IF; Recommended dilution: WB:1:500-1:5000, IHC:1:20-1:200, IF:1:50-1:200
<b>Form</b>	Liquid
<b>Conjugate</b>	Non-conjugated
<b>Storage Buffer</b>	Preservative: 0.03% Proclin 300 Constituents: 50% Glycerol, 0.01M PBS, pH 7.4
<b>Purification Method</b>	>95%, Protein G purified
<b>Isotype</b>	IgG
<b>Clonality</b>	Polyclonal
<b>Alias</b>	AP-1 complex subunit gamma-1 (Adaptor protein complex AP-1 subunit gamma-1) (Adaptor-related protein complex 1 subunit gamma-1) (Clathrin assembly protein complex 1 gamma-1 large chain) (Gamma1-adaptin) (Golgi adaptor HA1/AP1 adaptin subunit gamma-1), AP1G1, ADTG CLAPG1
<b>Immunogen Species</b>	Homo sapiens (Human)
<b>Research Area</b>	Signal Transduction
<b>Target Names</b>	AP1G1

## Image



### Western Blot

Positive WB detected in:K562 whole cell lysate,Mouse kidney tissue

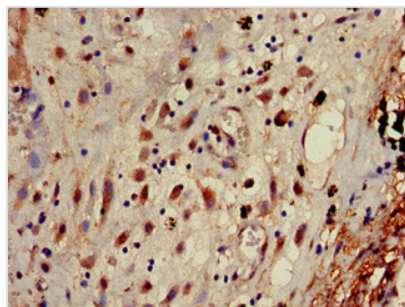
All lanes:AP1G1 antibody at 3.4µg/ml

Secondary

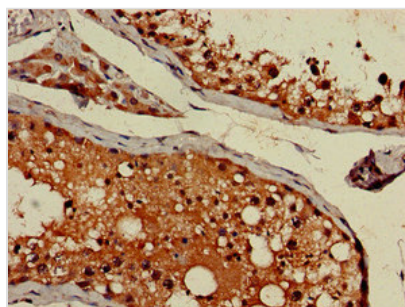
Goat polyclonal to rabbit IgG at 1/50000 dilution

Predicted band size: 92 KDa

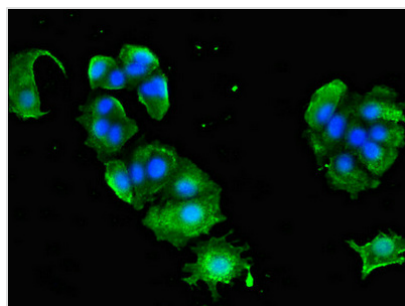
Observed band size: 92 KDa



Immunohistochemistry of paraffin-embedded human lung cancer using CSB-PA001861LA01HU at dilution of 1:100



Immunohistochemistry of paraffin-embedded human testis tissue using CSB-PA001861LA01HU at dilution of 1:100



Immunofluorescent analysis of MCF-7 cells using CSB-PA001861LA01HU at dilution of 1:100 and Alexa Fluor 488-conjugated AffiniPure Goat Anti-Rabbit IgG(H+L)

**Usage**

For Research Use Only. Not for use in diagnostic or therapeutic procedures.