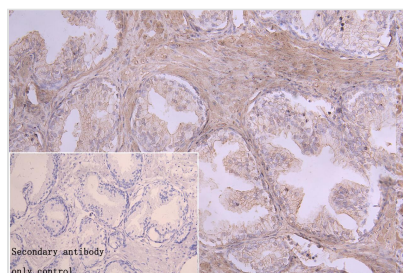




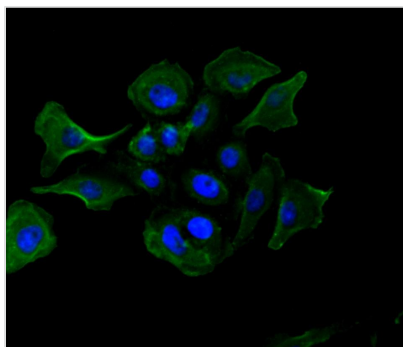
ATP9A Antibody

Product Code	CSB-PA002422LA01HU
Storage	Upon receipt, store at -20°C or -80°C. Avoid repeated freeze.
Uniprot No.	O75110
Immunogen	Recombinant Human Probable phospholipid-transporting ATPase IIA protein
Raised In	Rabbit
Species Reactivity	Human
Tested Applications	ELISA, WB, IHC, IF; Recommended dilution: WB:1:1000-1:3000, IHC:1:50-1:200, IF:1:20-1:100
Form	Liquid
Conjugate	Non-conjugated
Storage Buffer	Preservative: 0.02% sodium azide Constituents: 50% Glycerol, 0.01M PBS, pH 7.4
Purification Method	Antigen affinity purification
Isotype	IgG
Clonality	Polyclonal
Product Type	Polyclonal Antibody
Immunogen Species	Homo sapiens (Human)
Research Area	Others
Target Names	ATP9A

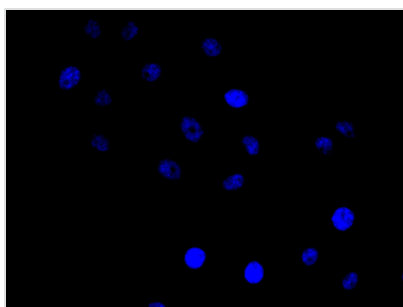
Image



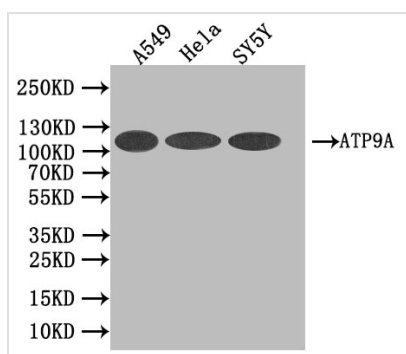
IHC image of CSB-PA002422LA01HU diluted at 1:50 and staining in paraffin-embedded human prostate tissue performed on a Leica Bond™ system. After dewaxing and hydration, antigen retrieval was mediated by high pressure in a citrate buffer (pH 6.0). Section was blocked with 10% normal goat serum 30min at RT. Then primary antibody (1% BSA) was incubated at 4°C overnight. The primary is detected by a Goat anti-rabbit polymer IgG labeled by HRP and visualized using 0.05% DAB. Secondary antibody only control: uses 1% BSA instead of primary antibody



Immunofluorescence staining of A549 cell with CSB-PA002422LA01HU at 1:20, counter-stained with DAPI. The cells were fixed in 4% formaldehyde and blocked in 10% normal Goat Serum. The cells were then incubated with the antibody overnight at 4C. The secondary antibody was Alexa Fluor 488-conjugated AffiniPure Goat Anti-Rabbit IgG(H+L).



Immunofluorescence staining of A549 cell with 5% goat serum, counter-stained with DAPI. The cells were fixed in 4% formaldehyde and blocked in 10% normal Goat Serum. The cells were then incubated with the antibody overnight at 4C. The secondary antibody was Alexa Fluor 488-conjugated AffiniPure Goat Anti-Rabbit IgG(H+L).



Western Blot

Positive WB detected in: A549 whole cell lysate, HeLa whole cell lysate, SY5Y whole cell lysate
 All lanes: ATP9A antibody at 1:1000
 Secondary
 Goat polyclonal to rabbit IgG at 1/50000 dilution
 Predicted band size: 118 kDa
 Observed band size: 118 kDa

Usage

For Research Use Only. Not for use in diagnostic or therapeutic procedures.