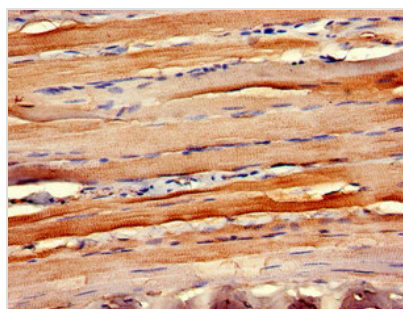




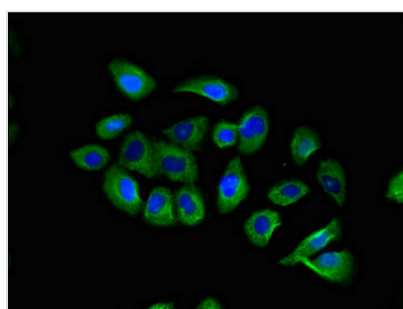
CCR10 Antibody

Product Code	CSB-PA004840LA01HU
Storage	Upon receipt, store at -20°C or -80°C. Avoid repeated freeze.
Uniprot No.	P46092
Immunogen	Recombinant Human C-C chemokine receptor type 10 protein (314-362AA)
Raised In	Rabbit
Species Reactivity	Human
Tested Applications	ELISA, WB, IHC, IF; Recommended dilution: WB:1:200-1:5000, IHC:1:20-1:200, IF:1:50-1:200
Form	Liquid
Conjugate	Non-conjugated
Storage Buffer	Preservative: 0.03% Proclin 300 Constituents: 50% Glycerol, 0.01M PBS, pH 7.4
Purification Method	>95%, Protein G purified
Isotype	IgG
Clonality	Polyclonal
Alias	C-C chemokine receptor type 10 (C-C CKR-10) (CC-CKR-10) (CCR-10) (G-protein coupled receptor 2), CCR10, GPR2
Immunogen Species	Homo sapiens (Human)
Research Area	Immunology
Target Names	CCR10

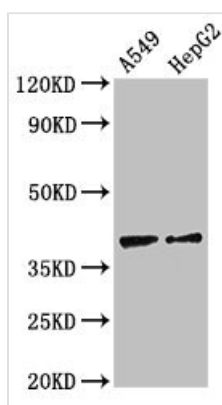
Image



Immunohistochemistry of paraffin-embedded human skeletal muscle tissue using CSB-PA004840LA01HU at dilution of 1:100



Immunofluorescent analysis of A549 cells using CSB-PA004840LA01HU at dilution of 1:100 and Alexa Fluor 488-conjugated AffiniPure Goat Anti-Rabbit IgG(H+L)



Western Blot

Positive WB detected in: A549 whole cell lysate,
HepG2 whole cell lysate

All lanes: CCR10 antibody at 2.7µg/ml

Secondary

Goat polyclonal to rabbit IgG at 1/50000 dilution

Predicted band size: 39 kDa

Observed band size: 39 kDa