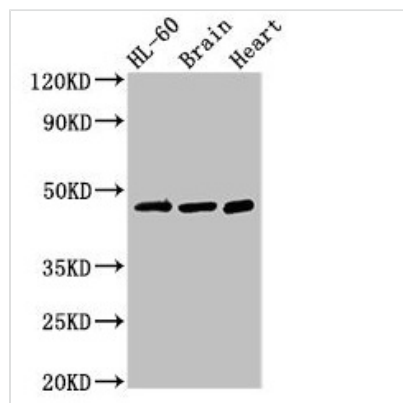




# CHST1 Antibody

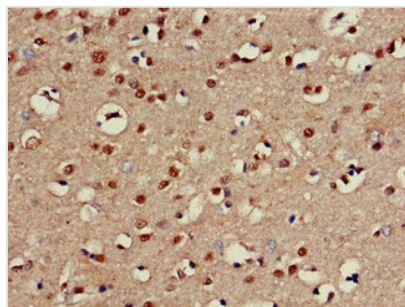
<b>Product Code</b>	CSB-PA005402LA01HU
<b>Storage</b>	Upon receipt, store at -20°C or -80°C. Avoid repeated freeze.
<b>Uniprot No.</b>	O43916
<b>Immunogen</b>	Recombinant Human Carbohydrate sulfotransferase 1 protein (305-397AA)
<b>Raised In</b>	Rabbit
<b>Species Reactivity</b>	Human, Mouse, Rat
<b>Tested Applications</b>	ELISA, WB, IHC; Recommended dilution: WB:1:500-1:5000, IHC:1:20-1:200
<b>Form</b>	Liquid
<b>Conjugate</b>	Non-conjugated
<b>Storage Buffer</b>	Preservative: 0.03% Proclin 300 Constituents: 50% Glycerol, 0.01M PBS, pH 7.4
<b>Purification Method</b>	>95%, Protein G purified
<b>Isotype</b>	IgG
<b>Clonality</b>	Polyclonal
<b>Alias</b>	Carbohydrate sulfotransferase 1 (EC 2.8.2.21) (Galactose/N-acetylglucosamine/N-acetylglucosamine 6-O-sulfotransferase 1) (GST-1) (Keratan sulfate Gal-6 sulfotransferase) (KS6ST) (KSGal6ST) (KSST), CHST1
<b>Immunogen Species</b>	Homo sapiens (Human)
<b>Research Area</b>	Others
<b>Target Names</b>	CHST1

## Image



### Western Blot

Positive WB detected in: HL60 whole cell lysate, Mouse brain tissue, Rat heart tissue  
 All lanes: CHST1 antibody at 3µg/ml  
 Secondary  
 Goat polyclonal to rabbit IgG at 1/50000 dilution  
 Predicted band size: 47 kDa  
 Observed band size: 47 kDa



Immunohistochemistry of paraffin-embedded human brain tissue using CSB-PA005402LA01HU at dilution of 1:100

---

**Usage**

For Research Use Only. Not for use in diagnostic or therapeutic procedures.