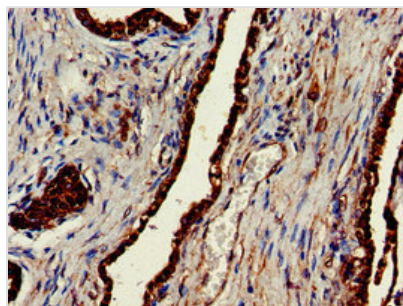




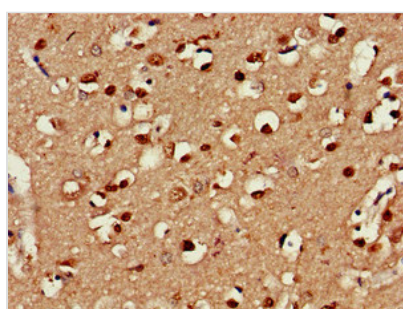
# CLINT1 Antibody

<b>Product Code</b>	CSB-PA005552LA01HU
<b>Storage</b>	Upon receipt, store at -20°C or -80°C. Avoid repeated freeze.
<b>Uniprot No.</b>	Q14677
<b>Immunogen</b>	Recombinant Human Clathrin interactor 1 protein (1-625AA)
<b>Raised In</b>	Rabbit
<b>Species Reactivity</b>	Human, Mouse, Rat
<b>Tested Applications</b>	ELISA, WB, IHC; Recommended dilution: WB:1:200-1:3000, IHC:1:20-1:200
<b>Form</b>	Liquid
<b>Conjugate</b>	Non-conjugated
<b>Storage Buffer</b>	Preservative: 0.03% Proclin 300 Constituents: 50% Glycerol, 0.01M PBS, pH 7.4
<b>Purification Method</b>	>95%, Protein G purified
<b>Isotype</b>	IgG
<b>Clonality</b>	Polyclonal
<b>Alias</b>	Clathrin interactor 1 (Clathrin-interacting protein localized in the trans-Golgi region) (Clint) (Enthoprotin) (Epsin-4) (Epsin-related protein) (EpsinR), CLINT1, ENTH EPN4 EPNR KIAA0171
<b>Immunogen Species</b>	Homo sapiens (Human)
<b>Research Area</b>	Signal Transduction
<b>Target Names</b>	CLINT1

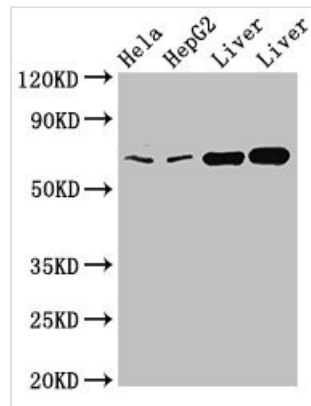
## Image



Immunohistochemistry of paraffin-embedded human prostate cancer using CSB-PA005552LA01HU at dilution of 1:100



Immunohistochemistry of paraffin-embedded human brain tissue using CSB-PA005552LA01HU at dilution of 1:100

**Western Blot**

Positive WB detected in: HeLa whole cell lysate, HepG2 whole cell lysate, Rat liver tissue, Mouse liver tissue

All lanes: CLINT1 antibody at 2 $\mu$ g/ml

Secondary

Goat polyclonal to rabbit IgG at 1/50000 dilution

Predicted band size: 69, 71 kDa

Observed band size: 69 kDa

**Usage**

For Research Use Only. Not for use in diagnostic or therapeutic procedures.