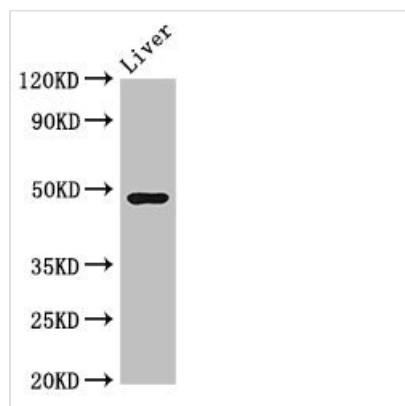




CPB2 Antibody

Product Code	CSB-PA005884LA01HU
Storage	Upon receipt, store at -20°C or -80°C. Avoid repeated freeze.
Uniprot No.	Q96IY4
Immunogen	Recombinant Human Carboxypeptidase B2 protein (225-372AA)
Raised In	Rabbit
Species Reactivity	Human, Mouse
Tested Applications	ELISA, WB, IHC, IF; Recommended dilution: WB:1:500-1:5000, IHC:1:20-1:200, IF:1:50-1:200
Form	Liquid
Conjugate	Non-conjugated
Storage Buffer	Preservative: 0.03% Proclin 300 Constituents: 50% Glycerol, 0.01M PBS, pH 7.4
Purification Method	>95%, Protein G purified
Isotype	IgG
Clonality	Polyclonal
Alias	Carboxypeptidase B2 (EC 3.4.17.20) (Carboxypeptidase U) (CPU) (Plasma carboxypeptidase B) (pCPB) (Thrombin-activable fibrinolysis inhibitor) (TAFI), CPB2
Immunogen Species	Homo sapiens (Human)
Research Area	Cardiovascular
Target Names	CPB2

Image



Western Blot

Positive WB detected in: Mouse liver tissue

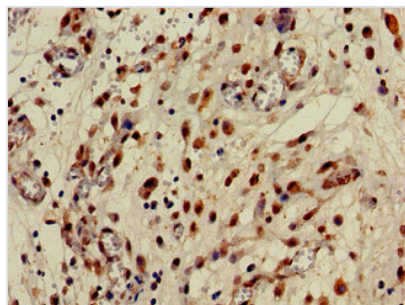
All lanes: CPB2 antibody at 3.4µg/ml

Secondary

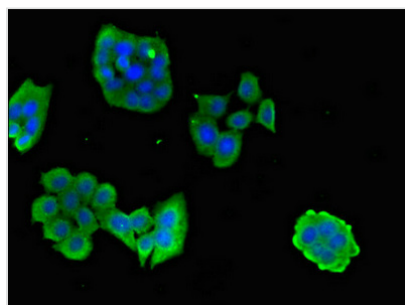
Goat polyclonal to rabbit IgG at 1/50000 dilution

Predicted band size: 49, 41 kDa

Observed band size: 49 kDa



Immunohistochemistry of paraffin-embedded human lung cancer using CSB-PA005884LA01HU at dilution of 1:100



Immunofluorescent analysis of PC-3 cells using CSB-PA005884LA01HU at dilution of 1:100 and Alexa Fluor 488-conjugated AffiniPure Goat Anti-Rabbit IgG(H+L)