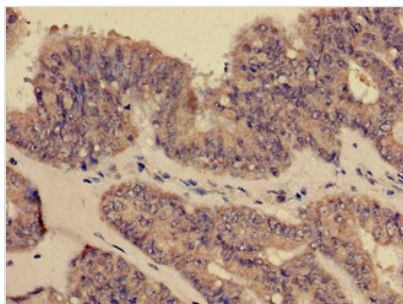




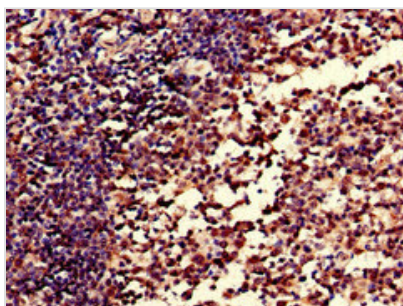
CR1 Antibody

Product Code	CSB-PA005932EA01HU
Storage	Upon receipt, store at -20°C or -80°C. Avoid repeated freeze.
Uniprot No.	P17927
Immunogen	Recombinant Human Complement receptor type 1 protein (901-1095AA)
Raised In	Rabbit
Species Reactivity	Human
Tested Applications	ELISA, IHC; Recommended dilution: IHC:1:20-1:200
Form	Liquid
Conjugate	Non-conjugated
Storage Buffer	Preservative: 0.03% Proclin 300 Constituents: 50% Glycerol, 0.01M PBS, pH 7.4
Purification Method	>95%, Protein G purified
Isotype	IgG
Clonality	Polyclonal
Alias	Complement receptor type 1 (C3b/C4b receptor) (CD antigen CD35), CR1, C3BR
Immunogen Species	Homo sapiens (Human)
Research Area	Immunology
Target Names	CR1

Image



Immunohistochemistry of paraffin-embedded human endometrial cancer using CSB-PA005932EA01HU at dilution of 1:100



Immunohistochemistry of paraffin-embedded human tonsil tissue using CSB-PA005932EA01HU at dilution of 1:100