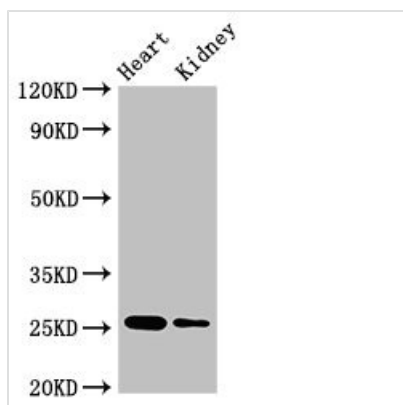




CSH2 Antibody

Product Code	CSB-PA006054LA01HU
Storage	Upon receipt, store at -20°C or -80°C. Avoid repeated freeze.
Uniprot No.	P0DML3
Immunogen	Recombinant Human Chorionic somatomammotropin hormone 2 protein (27-217AA)
Raised In	Rabbit
Species Reactivity	Human, Mouse
Tested Applications	ELISA, WB, IHC; Recommended dilution: WB:1:500-1:5000, IHC:1:20-1:200
Form	Liquid
Conjugate	Non-conjugated
Storage Buffer	Preservative: 0.03% Proclin 300 Constituents: 50% Glycerol, 0.01M PBS, pH 7.4
Purification Method	>95%, Protein G purified
Isotype	IgG
Clonality	Polyclonal
Alias	Chorionic somatomammotropin hormone 2 (Choriomammotropin) (Lactogen) (Placental lactogen) (PL), CSH2
Immunogen Species	Homo sapiens (Human)
Research Area	Signal Transduction
Target Names	CSH2

Image



Western Blot

Positive WB detected in: Mouse heart tissue,
Mouse kidney tissue

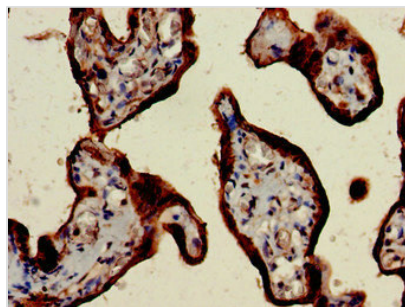
All lanes: CSH2 antibody at 4µg/ml

Secondary

Goat polyclonal to rabbit IgG at 1/50000 dilution

Predicted band size: 25, 19, 14 kDa

Observed band size: 25 kDa



Immunohistochemistry of paraffin-embedded human placenta tissue using CSB-PA006054LA01HU at dilution of 1:100

Usage

For Research Use Only. Not for use in diagnostic or therapeutic procedures.