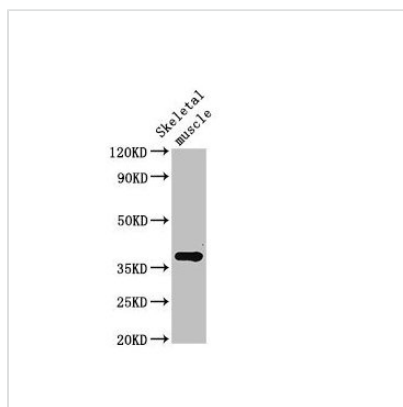




# Ctgf Antibody

<b>Product Code</b>	CSB-PA006147LA01MO
<b>Storage</b>	Upon receipt, store at -20°C or -80°C. Avoid repeated freeze.
<b>Uniprot No.</b>	P29268
<b>Immunogen</b>	Recombinant Mouse Connective tissue growth factor protein (26-344AA)
<b>Raised In</b>	Rabbit
<b>Species Reactivity</b>	Mouse, Rat
<b>Tested Applications</b>	ELISA, WB; Recommended dilution: WB:1:200-1:2000
<b>Form</b>	Liquid
<b>Conjugate</b>	Non-conjugated
<b>Storage Buffer</b>	Preservative: 0.03% Proclin 300 Constituents: 50% Glycerol, 0.01M PBS, pH 7.4
<b>Purification Method</b>	>95%, Protein G purified
<b>Isotype</b>	IgG
<b>Clonality</b>	Polyclonal
<b>Alias</b>	Connective tissue growth factor (CCN family member 2) (Hypertrophic chondrocyte-specific protein 24) (Protein FISP-12), Ctgf, Ccn2 Fisp-12 Fisp12 Hcs24
<b>Immunogen Species</b>	Mus musculus (Mouse)
<b>Research Area</b>	Cardiovascular
<b>Target Names</b>	Ctgf

## Image



### Western Blot

Positive WB detected in: Rat skeletal muscle tissue

All lanes: Ctgf antibody at 3μg/ml

### Secondary

Goat polyclonal to rabbit IgG at 1/50000 dilution

Predicted band size: 38 kDa

Observed band size: 38 kDa