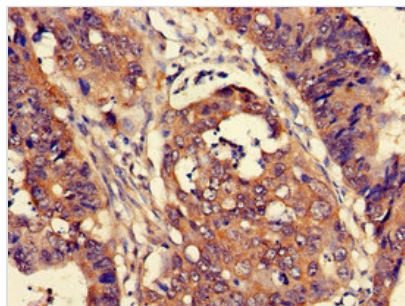




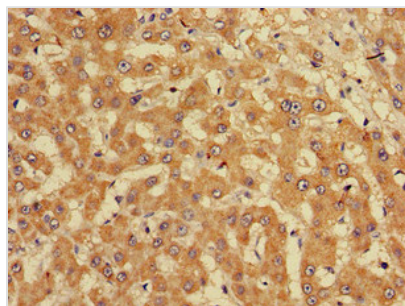
# CUTA Antibody

|                            |   |
|----------------------------|---|
| <b>Product Code</b>        | CSB-PA006226LA01HU  |
| <b>Storage</b>             | Upon receipt, store at -20°C or -80°C. Avoid repeated freeze.   |
| <b>Uniprot No.</b>         | O60888  |
| <b>Immunogen</b>           | Recombinant Human Protein CutA protein (33-150AA)   |
| <b>Raised In</b>           | Rabbit  |
| <b>Species Reactivity</b>  | Human   |
| <b>Tested Applications</b> | ELISA, IHC, IF; Recommended dilution: IHC:1:20-1:200, IF:1:50-1:200   |
| <b>Form</b>                | Liquid  |
| <b>Conjugate</b>           | Non-conjugated  |
| <b>Storage Buffer</b>      | Preservative: 0.03% Proclin 300<br>Constituents: 50% Glycerol, 0.01M PBS, pH 7.4  |
| <b>Purification Method</b> | >95%, Protein G purified  |
| <b>Isotype</b>             | IgG   |
| <b>Clonality</b>           | Polyclonal  |
| <b>Alias</b>               | Protein CutA (Acetylcholinesterase-associated protein) (Brain acetylcholinesterase putative membrane anchor), CUTA, ACHAP C6orf82 |
| <b>Immunogen Species</b>   | Homo sapiens (Human)  |
| <b>Research Area</b>       | Cell Biology  |
| <b>Target Names</b>        | CUTA  |

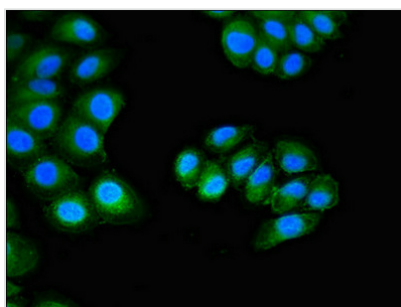
## Image



Immunohistochemistry of paraffin-embedded human colon cancer using CSB-PA006226LA01HU at dilution of 1:100



Immunohistochemistry of paraffin-embedded human liver cancer using CSB-PA006226LA01HU at dilution of 1:100



Immunofluorescent analysis of A549 cells using CSB-PA006226LA01HU at dilution of 1:100 and Alexa Fluor 488-conjugated AffiniPure Goat Anti-Rabbit IgG(H+L)