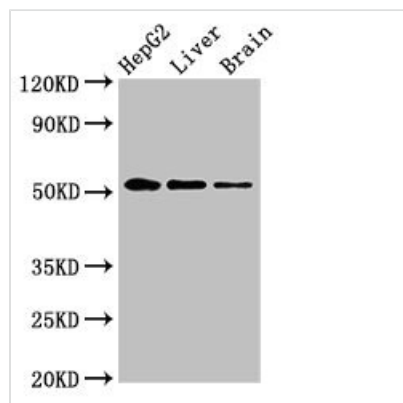




EGR2 Antibody

Product Code	CSB-PA007485LA01HU
Storage	Upon receipt, store at -20°C or -80°C. Avoid repeated freeze.
Uniprot No.	P11161
Immunogen	Recombinant Human E3 SUMO-protein ligase EGR2 protein (42-245AA)
Raised In	Rabbit
Species Reactivity	Human, Rat
Tested Applications	ELISA, WB, IF; Recommended dilution: WB:1:500-1:5000, IF:1:50-1:200
Form	Liquid
Conjugate	Non-conjugated
Storage Buffer	Preservative: 0.03% Proclin 300 Constituents: 50% Glycerol, 0.01M PBS, pH 7.4
Purification Method	>95%, Protein G purified
Isotype	IgG
Clonality	Polyclonal
Alias	E3 SUMO-protein ligase EGR2 (EC 2.3.2.-) (AT591) (E3 SUMO-protein transferase ERG2) (Early growth response protein 2) (EGR-2) (Zinc finger protein Krox-20), EGR2, KROX20
Immunogen Species	Homo sapiens (Human)
Research Area	Epigenetics and Nuclear Signaling
Target Names	EGR2

Image



Western Blot

Positive WB detected in: HepG2 whole cell lysate, Rat liver tissue, Rat brain tissue

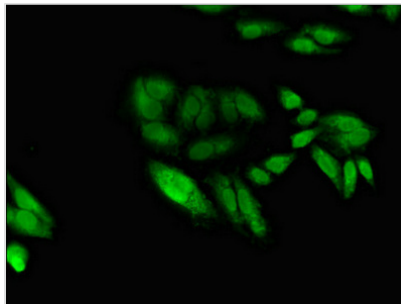
All lanes: EGR2 antibody at 3.4µg/ml

Secondary

Goat polyclonal to rabbit IgG at 1/50000 dilution

Predicted band size: 51, 45 kDa

Observed band size: 51 kDa



Immunofluorescent analysis of HeLa cells using CSB-PA007485LA01HU at dilution of 1:100 and Alexa Fluor 488-conjugated AffiniPure Goat Anti-Rabbit IgG(H+L)

Usage

For Research Use Only. Not for use in diagnostic or therapeutic procedures.