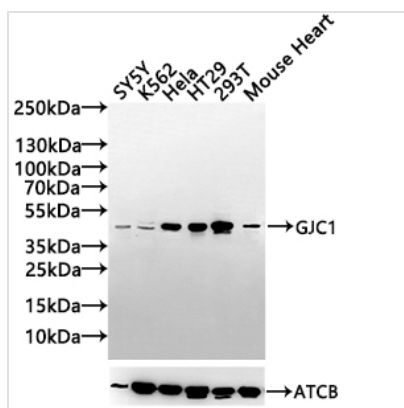




GJC1 Antibody

Product Code	CSB-PA009458EA01HU
Storage	Upon receipt, store at -20°C or -80°C. Avoid repeated freeze.
Uniprot No.	P36383
Immunogen	Recombinant Human Gap junction gamma-1 protein (247-396AA)
Raised In	Rabbit
Species Reactivity	Human,mouse
Tested Applications	ELISA, WB, IHC; Recommended dilution: WB:1:1000-1:3000, IHC:1:20-1:100
Form	Liquid
Conjugate	Non-conjugated
Storage Buffer	Preservative: 0.03% Proclin 300 Constituents: 50% Glycerol, 0.01M PBS, pH 7.4
Purification Method	>95%, Protein G purified
Isotype	IgG
Clonality	Polyclonal
Product Type	Polyclonal Antibody
Immunogen Species	Homo sapiens (Human)
Research Area	Signal Transduction
Target Names	GJC1

Image



Western Blot

Positive WB detected in: SY5Y whole cell lysate(30µg), K562 whole cell lysate(30µg), HeLa whole cell lysate(30µg), HT29 whole cell lysate(30µg),293T whole cell lysate(30µg),Mouse Heart tissue lysate30µg)

All lanes: GJC1 antibody at 1:1000

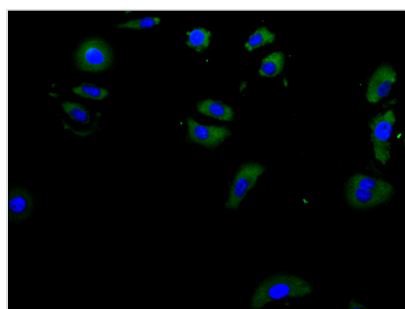
Secondary

Goat polyclonal to rabbit IgG at 1/20000 dilution

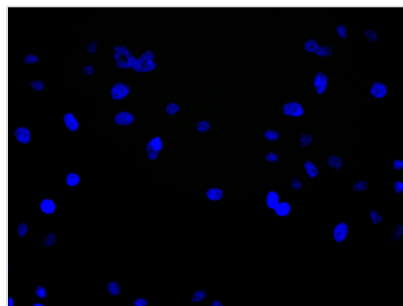
Predicted band size: 49 kDa

Observed band size: 49 kDa

Exposure time: 30s



Immunofluorescence staining of HeLa cell with CSB-PA009458ESR1HU at 1:20, counter-stained with DAPI. The cells were fixed in 4% formaldehyde and blocked in 10% normal Goat Serum. The cells were then incubated with the antibody overnight at 4C. The secondary antibody was Alexa Fluor 488-conjugated AffiniPure Goat Anti-Rabbit IgG(H+L).



Immunofluorescence staining of HeLa cell with 5% goat serum, counter-stained with DAPI. The cells were fixed in 4% formaldehyde and blocked in 10% normal Goat Serum. The cells were then incubated with the antibody overnight at 4C. The secondary antibody was Alexa Fluor 488-conjugated AffiniPure Goat Anti-Rabbit IgG(H+L).

Usage

For Research Use Only. Not for use in diagnostic or therapeutic procedures.