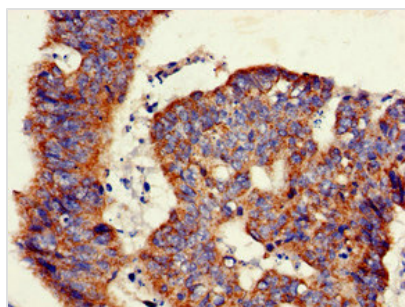




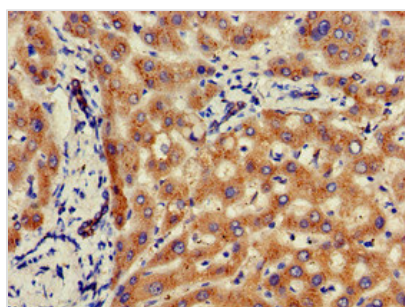
GLB1 Antibody

Product Code	CSB-PA009476LA01HU
Storage	Upon receipt, store at -20°C or -80°C. Avoid repeated freeze.
Uniprot No.	P16278
Immunogen	Recombinant Human Beta-galactosidase protein (317-455AA)
Raised In	Rabbit
Species Reactivity	Human
Tested Applications	ELISA, WB, IHC, IF; Recommended dilution: WB:1:200-1:5000, IHC:1:20-1:200, IF:1:50-1:200
Form	Liquid
Conjugate	Non-conjugated
Storage Buffer	Preservative: 0.03% Proclin 300 Constituents: 50% Glycerol, 0.01M PBS, pH 7.4
Purification Method	>95%, Protein G purified
Isotype	IgG
Clonality	Polyclonal
Alias	Beta-galactosidase (EC 3.2.1.23) (Acid beta-galactosidase) (Lactase) (Elastin receptor 1), GLB1, ELNR1
Immunogen Species	Homo sapiens (Human)
Research Area	Signal Transduction
Target Names	GLB1

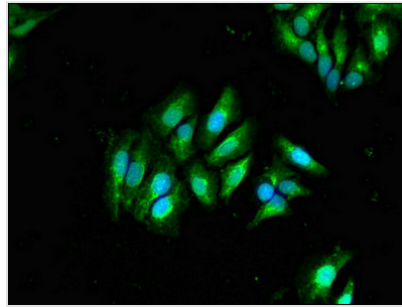
Image



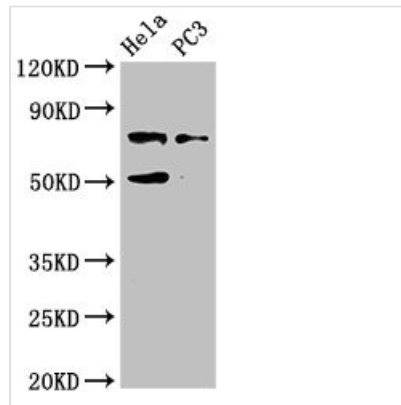
Immunohistochemistry of paraffin-embedded human colon cancer using CSB-PA009476LA01HU at dilution of 1:100



Immunohistochemistry of paraffin-embedded human liver tissue using CSB-PA009476LA01HU at dilution of 1:100



Immunofluorescent analysis of HeLa cells using CSB-PA009476LA01HU at dilution of 1:100 and Alexa Fluor 488-conjugated AffiniPure Goat Anti-Rabbit IgG(H+L)

**Western Blot**

Positive WB detected in: HeLa whole cell lysate, PC-3 whole cell lysate

All lanes: GLB1 antibody at 4µg/ml

Secondary

Goat polyclonal to rabbit IgG at 1/50000 dilution

Predicted band size: 77, 61, 73 kDa

Observed band size: 77 kDa

Usage

For Research Use Only. Not for use in diagnostic or therapeutic procedures.