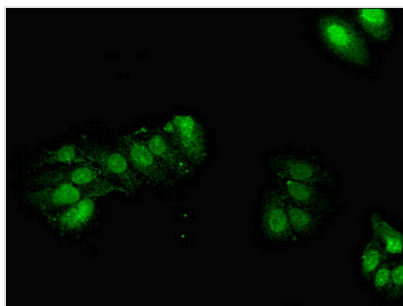




GPX2 Antibody

| | |
|----------------------------|--|
| Product Code | CSB-PA009867LA01HU |
| Storage | Upon receipt, store at -20°C or -80°C. Avoid repeated freeze. |
| Uniprot No. | P18283 |
| Immunogen | Recombinant Human Glutathione peroxidase 2 protein (71-168AA) |
| Raised In | Rabbit |
| Species Reactivity | Human |
| Tested Applications | ELISA, IF; Recommended dilution: IF:1:50-1:200 |
| Form | Liquid |
| Conjugate | Non-conjugated |
| Storage Buffer | Preservative: 0.03% Proclin 300 Constituents: 50% Glycerol, 0.01M PBS, pH 7.4 |
| Purification Method | >95%, Protein G purified |
| Isotype | IgG |
| Clonality | Polyclonal |
| Alias | Glutathione peroxidase 2 (GPx-2) (GSHPx-2) (EC 1.11.1.9) (Gastrointestinal glutathione peroxidase) (Glutathione peroxidase-gastrointestinal) (GPx-GI) (GSHPx-GI) (Glutathione peroxidase-related protein 2) (GPRP-2), GPX2 |
| Immunogen Species | Homo sapiens (Human) |
| Research Area | Cell Biology |
| Target Names | GPX2 |

Image



Immunofluorescent analysis of HepG2 cells using CSB-PA009867LA01HU at dilution of 1:100 and Alexa Fluor 488-conjugated AffiniPure Goat Anti-Rabbit IgG(H+L)

Usage

For Research Use Only. Not for use in diagnostic or therapeutic procedures.