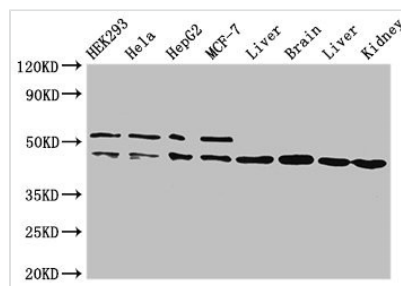




IDH1 Antibody

Product Code	CSB-PA010989EA01HU
Storage	Upon receipt, store at -20°C or -80°C. Avoid repeated freeze.
Uniprot No.	O75874
Immunogen	Recombinant Human Isocitrate dehydrogenase [NADP] cytoplasmic protein (1-240AA)
Raised In	Rabbit
Species Reactivity	Human, Mouse, Rat
Tested Applications	ELISA, WB, IHC, IF; Recommended dilution: WB:1:500-1:5000, IHC:1:20-1:200, IF:1:50-1:200
Form	Liquid
Conjugate	Non-conjugated
Storage Buffer	Preservative: 0.03% Proclin 300 Constituents: 50% Glycerol, 0.01M PBS, pH 7.4
Purification Method	>95%, Protein G purified
Isotype	IgG
Clonality	Polyclonal
Alias	Isocitrate dehydrogenase [NADP] cytoplasmic (IDH) (EC 1.1.1.42) (Cytosolic NADP-isocitrate dehydrogenase) (IDP) (NADP(+)-specific ICDH) (Oxalosuccinate decarboxylase), IDH1, PICD
Immunogen Species	Homo sapiens (Human)
Research Area	Signal Transduction
Target Names	IDH1

Image



Western Blot

Positive WB detected in: HEK293 whole cell lysate, HeLa whole cell lysate, HepG2 whole cell lysate, MCF-7 whole cell lysate, Rat liver tissue, Mouse brain tissue, Mouse liver tissue, Mouse kidney tissue

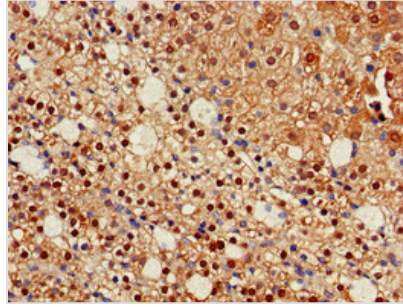
All lanes: IDH1 antibody at 2µg/ml

Secondary

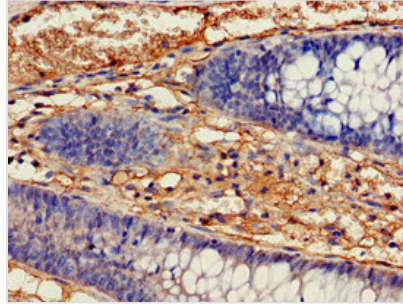
Goat polyclonal to rabbit IgG at 1/50000 dilution

Predicted band size: 47 kDa

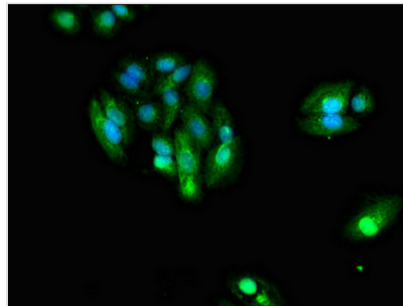
Observed band size: 47, 52 kDa



Immunohistochemistry of paraffin-embedded human adrenal gland tissue using CSB-PA010989EA01HU at dilution of 1:100



Immunohistochemistry of paraffin-embedded human colon cancer using CSB-PA010989EA01HU at dilution of 1:100



Immunofluorescent analysis of HepG2 cells using CSB-PA010989EA01HU at dilution of 1:100 and Alexa Fluor 488-conjugated AffiniPure Goat Anti-Rabbit IgG(H+L)

Usage

For Research Use Only. Not for use in diagnostic or therapeutic procedures.