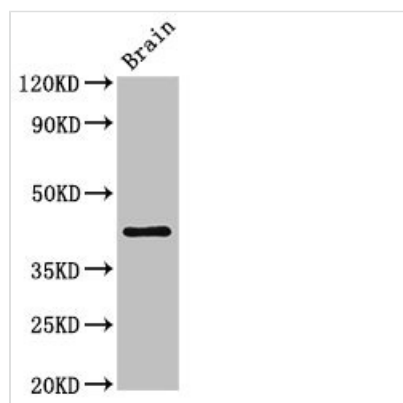




IGHD Antibody

Product Code	CSB-PA011113LA01HU
Storage	Upon receipt, store at -20°C or -80°C. Avoid repeated freeze.
Uniprot No.	P01880
Immunogen	Recombinant Human Ig delta chain C region protein (1-240AA)
Raised In	Rabbit
Species Reactivity	Human, Mouse
Tested Applications	ELISA, WB, IHC; Recommended dilution: WB:1:1000-1:5000, IHC:1:20-1:200
Form	Liquid
Conjugate	Non-conjugated
Storage Buffer	Preservative: 0.03% Proclin 300 Constituents: 50% Glycerol, 0.01M PBS, pH 7.4
Purification Method	>95%, Protein G purified
Isotype	IgG
Clonality	Polyclonal
Alias	Immunoglobulin heavy constant delta (Ig delta chain C region) (Ig delta chain C region NIG-65) (Ig delta chain C region WAH), IGHD
Immunogen Species	Homo sapiens (Human)
Research Area	Immunology
Target Names	IGHD

Image



Western Blot

Positive WB detected in: Mouse brain tissue

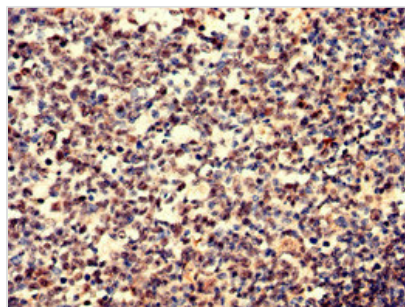
All lanes: IGHD antibody at 3µg/ml

Secondary

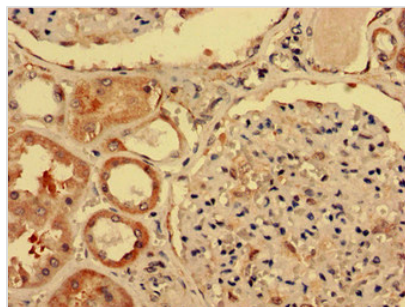
Goat polyclonal to rabbit IgG at 1/50000 dilution

Predicted band size: 43, 38 kDa

Observed band size: 43 kDa



Immunohistochemistry analysis of human tonsil tissue using CSB-PA011113LA01HU at dilution of 1:100



Immunohistochemistry analysis of human kidney tissue using CSB-PA011113LA01HU at dilution of 1:100

Usage

For Research Use Only. Not for use in diagnostic or therapeutic procedures.