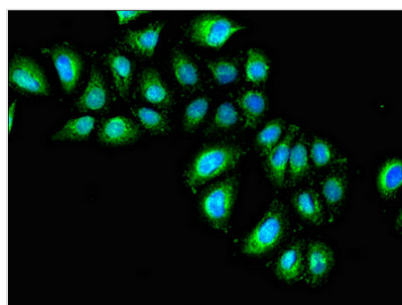




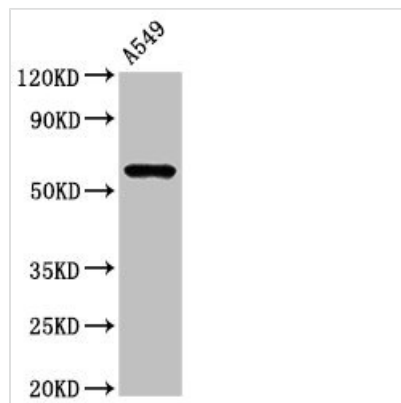
IL1R1 Antibody

Product Code	CSB-PA011621EA01HU
Storage	Upon receipt, store at -20°C or -80°C. Avoid repeated freeze.
Uniprot No.	P14778
Immunogen	Recombinant Human Interleukin-1 receptor type 1 protein (18-320AA)
Raised In	Rabbit
Species Reactivity	Human
Tested Applications	ELISA, WB, IF; Recommended dilution: WB:1:500-1:5000, IF:1:50-1:200
Form	Liquid
Conjugate	Non-conjugated
Storage Buffer	Preservative: 0.03% Proclin 300 Constituents: 50% Glycerol, 0.01M PBS, pH 7.4
Purification Method	>95%, Protein G purified
Isotype	IgG
Clonality	Polyclonal
Alias	Interleukin-1 receptor type 1 (IL-1R-1) (IL-1RT-1) (IL-1RT1) (CD121 antigen-like family member A) (Interleukin-1 receptor alpha) (IL-1R-alpha) (Interleukin-1 receptor type I) (p80) (CD antigen CD121a) [Cleaved into: Interleukin-1 receptor type 1, membrane form (mIL-1R1) (mIL-1RI); Interleukin-1 receptor type 1, soluble form (sIL-1R1) (sIL-1RI)], IL1R1, IL1R IL1RA IL1RT1
Immunogen Species	Homo sapiens (Human)
Research Area	Immunology
Target Names	IL1R1

Image



Immunofluorescent analysis of A549 cells using CSB-PA011621EA01HU at dilution of 1: 100 and Alexa Fluor 488-conjugated AffiniPure Goat Anti-Rabbit IgG(H+L)



Western Blot

Positive WB detected in: A549 whole cell lysate

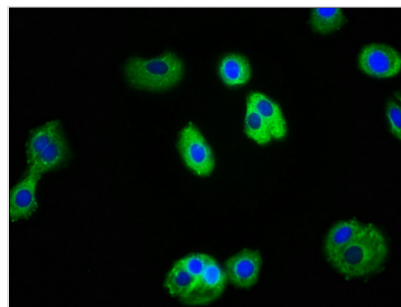
All lanes: IL1R1 antibody at 3μg/ml

Secondary

Goat polyclonal to rabbit IgG at 1/50000 dilution

Predicted band size: 66 kDa

Observed band size: 66 kDa



Immunofluorescence staining of HepG2 cells with CSB-PA011621EA01HU at 1:100, counter-stained with DAPI. The cells were fixed in 4% formaldehyde, permeabilized using 0.2% Triton X-100 and blocked in 10% normal Goat Serum. The cells were then incubated with the antibody overnight at 4°C. The secondary antibody was Alexa Fluor 488-conjugated AffiniPure Goat Anti-Rabbit IgG(H+L).