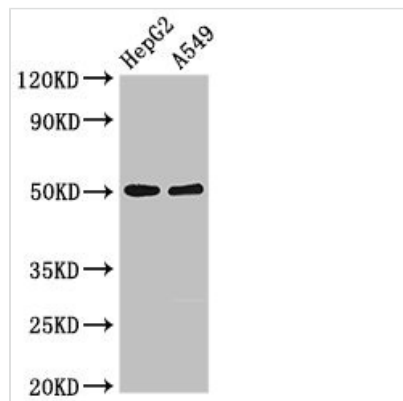




# KIR3DL1 Antibody

<b>Product Code</b>	CSB-PA012364LA01HU
<b>Storage</b>	Upon receipt, store at -20°C or -80°C. Avoid repeated freeze.
<b>Uniprot No.</b>	P43629
<b>Immunogen</b>	Recombinant Human Killer cell immunoglobulin-like receptor 3DL1 protein (81-336AA)
<b>Raised In</b>	Rabbit
<b>Species Reactivity</b>	Human
<b>Tested Applications</b>	ELISA, WB, IHC, IF; Recommended dilution: WB:1:500-1:5000, IHC:1:20-1:200, IF:1:50-1:200
<b>Form</b>	Liquid
<b>Conjugate</b>	Non-conjugated
<b>Storage Buffer</b>	Preservative: 0.03% Proclin 300 Constituents: 50% Glycerol, 0.01M PBS, pH 7.4
<b>Purification Method</b>	>95%, Protein G purified
<b>Isotype</b>	IgG
<b>Clonality</b>	Polyclonal
<b>Alias</b>	Killer cell immunoglobulin-like receptor 3DL1 (CD158 antigen-like family member E) (HLA-BW4-specific inhibitory NK cell receptor) (MHC class I NK cell receptor) (Natural killer-associated transcript 3) (NKAT-3) (p70 natural killer cell receptor clones CL-2/CL-11) (p70 NK receptor CL-2/CL-11) (CD antigen CD158e), KIR3DL1, CD158E NKAT3 NKB1
<b>Immunogen Species</b>	Homo sapiens (Human)
<b>Research Area</b>	Immunology
<b>Target Names</b>	KIR3DL1

## Image



### Western Blot

Positive WB detected in: HepG2 whole cell lysate, A549 whole cell lysate

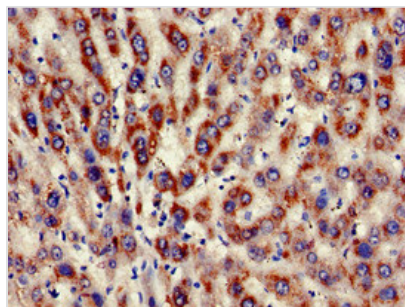
All lanes: KIR3DL1 antibody at 2.5µg/ml

Secondary

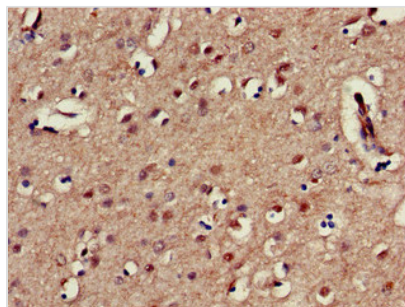
Goat polyclonal to rabbit IgG at 1/50000 dilution

Predicted band size: 50, 39 kDa

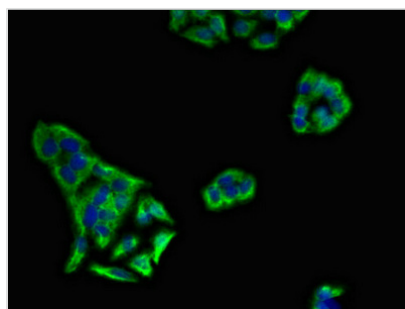
Observed band size: 50 kDa



Immunohistochemistry of paraffin-embedded human liver tissue using CSB-PA012364LA01HU at dilution of 1:100



Immunohistochemistry of paraffin-embedded human brain tissue using CSB-PA012364LA01HU at dilution of 1:100



Immunofluorescent analysis of PC-3 cells using CSB-PA012364LA01HU at dilution of 1:100 and Alexa Fluor 488-conjugated AffiniPure Goat Anti-Rabbit IgG(H+L)

**Usage**

For Research Use Only. Not for use in diagnostic or therapeutic procedures.