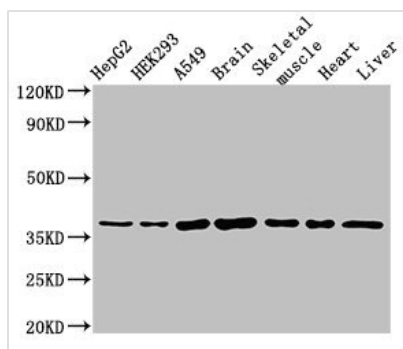




MYF6 Antibody

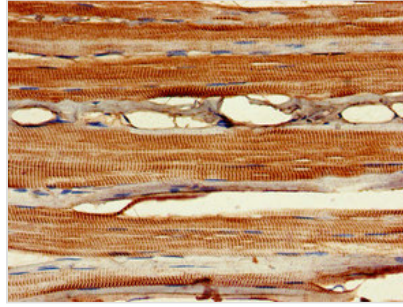
Product Code	CSB-PA015288LA01HU
Storage	Upon receipt, store at -20°C or -80°C. Avoid repeated freeze.
Uniprot No.	P23409
Immunogen	Recombinant Human Myogenic factor 6 protein (26-232AA)
Raised In	Rabbit
Species Reactivity	Human, Mouse, Rat
Tested Applications	ELISA, WB, IHC, IF; Recommended dilution: WB:1:500-1:5000, IHC:1:20-1:200, IF:1:50-1:200
Form	Liquid
Conjugate	Non-conjugated
Storage Buffer	Preservative: 0.03% Proclin 300 Constituents: 50% Glycerol, 0.01M PBS, pH 7.4
Purification Method	>95%, Protein G purified
Isotype	IgG
Clonality	Polyclonal
Alias	Myogenic factor 6 (Myf-6) (Class C basic helix-loop-helix protein 4) (bHLHc4) (Muscle-specific regulatory factor 4), MYF6, BHLHC4 MRF4
Immunogen Species	Homo sapiens (Human)
Research Area	Epigenetics and Nuclear Signaling
Target Names	MYF6

Image

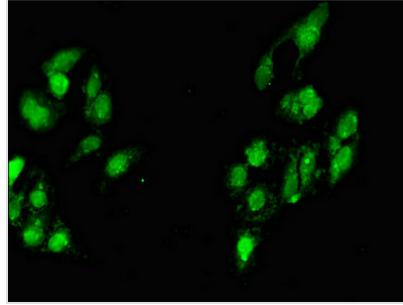


Western Blot

Positive WB detected in: HepG2 whole cell lysate, HEK293 whole cell lysate, A549 whole cell lysate, Mouse brain tissue, Mouse skeletal muscle tissue, Rat heart tissue, Rat liver tissue
 All lanes: MYF6 antibody at 3µg/ml
 Secondary
 Goat polyclonal to rabbit IgG at 1/50000 dilution
 Predicted band size: 27 kDa
 Observed band size: 37 kDa



Immunohistochemistry of paraffin-embedded human skeletal muscle tissue using CSB-PA015288LA01HU at dilution of 1:100



Immunofluorescent analysis of HeLa cells using CSB-PA015288LA01HU at dilution of 1:100 and Alexa Fluor 488-conjugated AffiniPure Goat Anti-Rabbit IgG(H+L)

Usage

For Research Use Only. Not for use in diagnostic or therapeutic procedures.