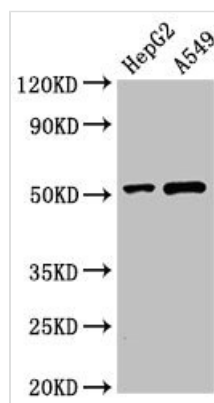




# PNLIPRP2 Antibody

|                            |  |
|----------------------------|--|
| <b>Product Code</b>        | CSB-PA018264LA01HU   |
| <b>Storage</b>             | Upon receipt, store at -20°C or -80°C. Avoid repeated freeze.  |
| <b>Uniprot No.</b>         | P54317   |
| <b>Immunogen</b>           | Recombinant Human Pancreatic lipase-related protein 2 protein (305-460AA)                                |
| <b>Raised In</b>           | Rabbit   |
| <b>Species Reactivity</b>  | Human  |
| <b>Tested Applications</b> | ELISA, WB, IHC; Recommended dilution: WB:1:500-1:5000, IHC:1:20-1:200                                    |
| <b>Form</b>                | Liquid   |
| <b>Conjugate</b>           | Non-conjugated   |
| <b>Storage Buffer</b>      | Preservative: 0.03% Proclin 300<br>Constituents: 50% Glycerol, 0.01M PBS, pH 7.4                         |
| <b>Purification Method</b> | >95%, Protein G purified   |
| <b>Isotype</b>             | IgG  |
| <b>Clonality</b>           | Polyclonal   |
| <b>Alias</b>               | Pancreatic lipase-related protein 2 (PL-RP2) (EC 3.1.1.26) (EC 3.1.1.3) (Galactolipase), PNLIPRP2, PLRP2 |
| <b>Immunogen Species</b>   | Homo sapiens (Human)   |
| <b>Research Area</b>       | Signal Transduction  |
| <b>Target Names</b>        | PNLIPRP2   |

## Image



### Western Blot

Positive WB detected in: HepG2 whole cell lysate, A549 whole cell lysate

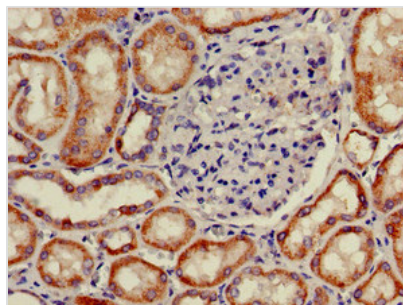
All lanes: PNLIPRP2 antibody at 3µg/ml

Secondary

Goat polyclonal to rabbit IgG at 1/50000 dilution

Predicted band size: 52 kDa

Observed band size: 52 kDa



Immunohistochemistry of paraffin-embedded human kidney tissue using CSB-PA018264LA01HU at dilution of 1:100