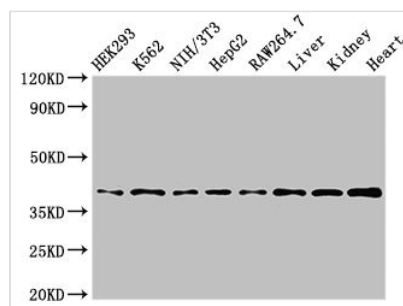




# POLR1C Antibody

<b>Product Code</b>	CSB-PA018324LA01HU
<b>Storage</b>	Upon receipt, store at -20°C or -80°C. Avoid repeated freeze.
<b>Uniprot No.</b>	O15160
<b>Immunogen</b>	Recombinant Human DNA-directed RNA polymerases I and III subunit RPAC1 protein (125-230AA)
<b>Raised In</b>	Rabbit
<b>Species Reactivity</b>	Human, Mouse, Rat
<b>Tested Applications</b>	ELISA, WB; Recommended dilution: WB:1:500-1:5000
<b>Form</b>	Liquid
<b>Conjugate</b>	Non-conjugated
<b>Storage Buffer</b>	Preservative: 0.03% Proclin 300 Constituents: 50% Glycerol, 0.01M PBS, pH 7.4
<b>Purification Method</b>	>95%, Protein G purified
<b>Isotype</b>	IgG
<b>Clonality</b>	Polyclonal
<b>Alias</b>	DNA-directed RNA polymerases I and III subunit RPAC1 (DNA-directed RNA polymerase I subunit C) (RNA polymerases I and III subunit AC1) (AC40) (DNA-directed RNA polymerases I and III 40 kDa polypeptide) (RPA40) (RPA39) (RPC40), POLR1C, POLR1E
<b>Immunogen Species</b>	Homo sapiens (Human)
<b>Research Area</b>	Epigenetics and Nuclear Signaling
<b>Target Names</b>	POLR1C

## Image



### Western Blot

Positive WB detected in: HEK293 whole cell lysate, K562 whole cell lysate, NIH/3T3 whole cell lysate, HepG2 whole cell lysate, RAW264.7 whole cell lysate, Mouse liver tissue, Mouse kidney tissue, Rat heart tissue

All lanes: POLR1C antibody at 3μg/ml

Secondary

Goat polyclonal to rabbit IgG at 1/50000 dilution

Predicted band size: 40, 39 kDa

Observed band size: 40 kDa