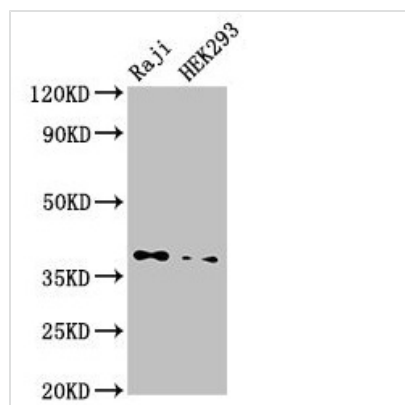




# PPP1CB Antibody

<b>Product Code</b>	CSB-PA018504LA01HU
<b>Storage</b>	Upon receipt, store at -20°C or -80°C. Avoid repeated freeze.
<b>Uniprot No.</b>	P62140
<b>Immunogen</b>	Recombinant Human Serine/threonine-protein phosphatase PP1-beta catalytic subunit protein (175-221AA)
<b>Raised In</b>	Rabbit
<b>Species Reactivity</b>	Human
<b>Tested Applications</b>	ELISA, WB, IHC; Recommended dilution: WB:1:500-1:5000, IHC:1:20-1:200
<b>Form</b>	Liquid
<b>Conjugate</b>	Non-conjugated
<b>Storage Buffer</b>	Preservative: 0.03% Proclin 300 Constituents: 50% Glycerol, 0.01M PBS, pH 7.4
<b>Purification Method</b>	>95%, Protein G purified
<b>Isotype</b>	IgG
<b>Clonality</b>	Polyclonal
<b>Alias</b>	Serine/threonine-protein phosphatase PP1-beta catalytic subunit (PP-1B) (PPP1CD) (EC 3.1.3.16) (EC 3.1.3.53), PPP1CB
<b>Immunogen Species</b>	Homo sapiens (Human)
<b>Research Area</b>	Others
<b>Target Names</b>	PPP1CB

## Image



### Western Blot

Positive WB detected in: Raji whole cell lysate, HEK293 whole cell lysate

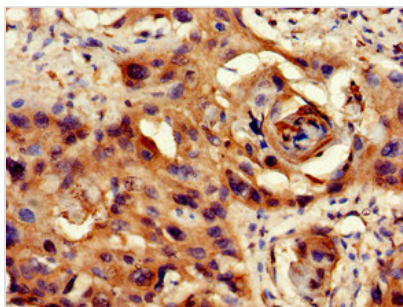
All lanes: PPP1CB antibody at 3.5µg/ml

Secondary

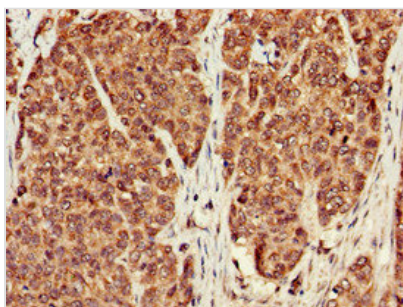
Goat polyclonal to rabbit IgG at 1/50000 dilution

Predicted band size: 38 kDa

Observed band size: 38 kDa



Immunohistochemistry of paraffin-embedded human cervical cancer using CSB-PA018504LA01HU at dilution of 1:100



Immunohistochemistry of paraffin-embedded human ovarian cancer using CSB-PA018504LA01HU at dilution of 1:100