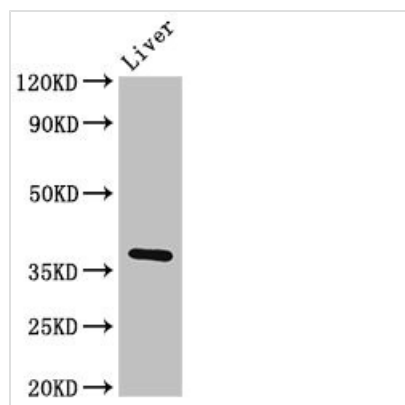




# Ppp1cb Antibody

<b>Product Code</b>	CSB-PA018504LA01MO
<b>Storage</b>	Upon receipt, store at -20°C or -80°C. Avoid repeated freeze.
<b>Uniprot No.</b>	P62141
<b>Immunogen</b>	Recombinant Mouse Serine/threonine-protein phosphatase PP1-beta catalytic subunit protein (2-327AA)
<b>Raised In</b>	Rabbit
<b>Species Reactivity</b>	Mouse, Rat
<b>Tested Applications</b>	ELISA, WB; Recommended dilution: WB:1:500-1:5000
<b>Form</b>	Liquid
<b>Conjugate</b>	Non-conjugated
<b>Storage Buffer</b>	Preservative: 0.03% Proclin 300 Constituents: 50% Glycerol, 0.01M PBS, pH 7.4
<b>Purification Method</b>	>95%, Protein G purified
<b>Isotype</b>	IgG
<b>Clonality</b>	Polyclonal
<b>Alias</b>	Serine/threonine-protein phosphatase PP1-beta catalytic subunit (PP-1B) (EC 3.1.3.16) (EC 3.1.3.53), Ppp1cb
<b>Immunogen Species</b>	Mus musculus (Mouse)
<b>Research Area</b>	Others
<b>Target Names</b>	Ppp1cb

## Image



### Western Blot

Positive WB detected in: Rat liver tissue

All lanes: Ppp1cb antibody at 3μg/ml

Secondary

Goat polyclonal to rabbit IgG at 1/50000 dilution

Predicted band size: 38 kDa

Observed band size: 38 kDa