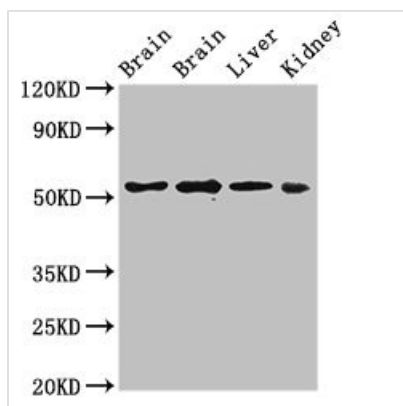




PPP2R2A Antibody

Product Code	CSB-PA018564LA01HU
Storage	Upon receipt, store at -20°C or -80°C. Avoid repeated freeze.
Uniprot No.	P63151
Immunogen	Recombinant Human Serine/threonine-protein phosphatase 2A 55 kDa regulatory subunit B alpha isoform protein (2-149AA)
Raised In	Rabbit
Species Reactivity	Human, Mouse, Rat
Tested Applications	ELISA, WB, IHC, IF; Recommended dilution: WB:1:500-1:5000, IHC:1:20-1:200, IF:1:50-1:200
Form	Liquid
Conjugate	Non-conjugated
Storage Buffer	Preservative: 0.03% Proclin 300 Constituents: 50% Glycerol, 0.01M PBS, pH 7.4
Purification Method	>95%, Protein G purified
Isotype	IgG
Clonality	Polyclonal
Alias	Serine/threonine-protein phosphatase 2A 55 kDa regulatory subunit B alpha isoform (PP2A subunit B isoform B55-alpha) (PP2A subunit B isoform PR55-alpha) (PP2A subunit B isoform R2-alpha) (PP2A subunit B isoform alpha), PPP2R2A
Immunogen Species	Homo sapiens (Human)
Research Area	Neuroscience
Target Names	PPP2R2A

Image



Western Blot

Positive WB detected in: Rat brain tissue, Mouse brain tissue, Mouse liver tissue, Mouse kidney tissue

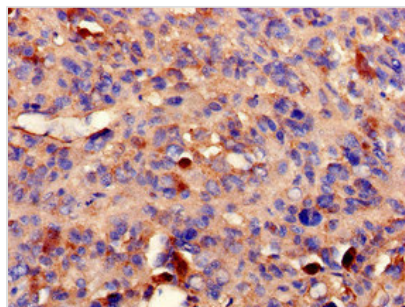
All lanes: PPP2R2A antibody at 3µg/ml

Secondary

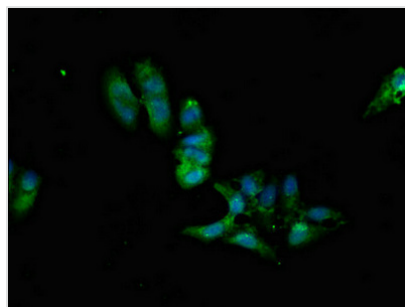
Goat polyclonal to rabbit IgG at 1/50000 dilution

Predicted band size: 52, 53 kDa

Observed band size: 52 kDa



Immunohistochemistry of paraffin-embedded human melanoma using CSB-PA018564LA01HU at dilution of 1:100



Immunofluorescent analysis of HeLa cells using CSB-PA018564LA01HU at dilution of 1:100 and Alexa Fluor 488-conjugated AffiniPure Goat Anti-Rabbit IgG(H+L)

Usage

For Research Use Only. Not for use in diagnostic or therapeutic procedures.