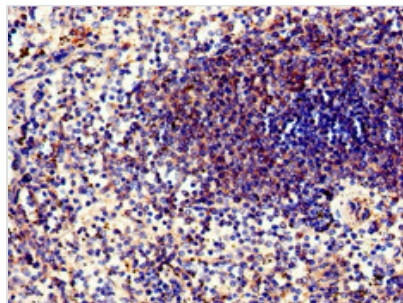




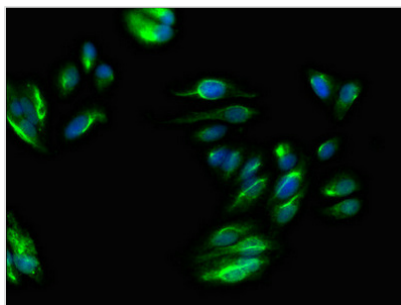
PPP6C Antibody

Product Code	CSB-PA018583LA01HU
Storage	Upon receipt, store at -20°C or -80°C. Avoid repeated freeze.
Uniprot No.	O00743
Immunogen	Recombinant Human Serine/threonine-protein phosphatase 6 catalytic subunit protein (40-211AA)
Raised In	Rabbit
Species Reactivity	Human
Tested Applications	ELISA, IHC, IF; Recommended dilution: IHC:1:20-1:200, IF:1:50-1:200
Form	Liquid
Conjugate	Non-conjugated
Storage Buffer	Preservative: 0.03% Proclin 300 Constituents: 50% Glycerol, 0.01M PBS, pH 7.4
Purification Method	>95%, Protein G purified
Isotype	IgG
Clonality	Polyclonal
Alias	Serine/threonine-protein phosphatase 6 catalytic subunit (PP6C) (EC 3.1.3.16) [Cleaved into: Serine/threonine-protein phosphatase 6 catalytic subunit, N-terminally processed], PPP6C, PPP6
Immunogen Species	Homo sapiens (Human)
Research Area	Signal Transduction
Target Names	PPP6C

Image



Immunohistochemistry of paraffin-embedded human spleen tissue using CSB-PA018583LA01HU at dilution of 1:100



Immunofluorescent analysis of HepG2 cells using CSB-PA018583LA01HU at dilution of 1:100 and Alexa Fluor 488-conjugated AffiniPure Goat Anti-Rabbit IgG(H+L)