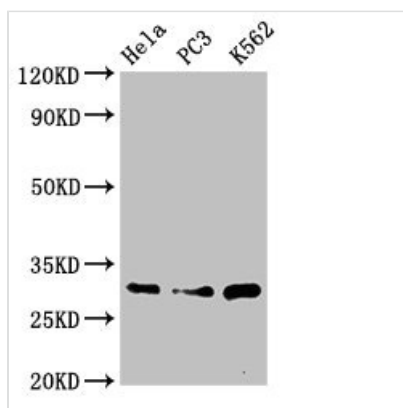




# PSMA1 Antibody

<b>Product Code</b>	CSB-PA018865LA01HU
<b>Storage</b>	Upon receipt, store at -20°C or -80°C. Avoid repeated freeze.
<b>Uniprot No.</b>	P25786
<b>Immunogen</b>	Recombinant Human Proteasome subunit alpha type-1 protein (163-263AA)
<b>Raised In</b>	Rabbit
<b>Species Reactivity</b>	Human
<b>Tested Applications</b>	ELISA, WB, IHC, IF, IP; Recommended dilution: WB:1:500-1:5000, IHC:1:20-1:200, IF:1:50-1:200, IP:1:200-1:2000
<b>Form</b>	Liquid
<b>Conjugate</b>	Non-conjugated
<b>Storage Buffer</b>	Preservative: 0.03% Proclin 300 Constituents: 50% Glycerol, 0.01M PBS, pH 7.4
<b>Purification Method</b>	>95%, Protein G purified
<b>Isotype</b>	IgG
<b>Clonality</b>	Polyclonal
<b>Alias</b>	Proteasome subunit alpha type-1 (EC 3.4.25.1) (30 kDa prosomal protein) (PROS-30) (Macropain subunit C2) (Multicatalytic endopeptidase complex subunit C2) (Proteasome component C2) (Proteasome nu chain), PSMA1, HC2 NU PROS30 PSC2
<b>Immunogen Species</b>	Homo sapiens (Human)
<b>Research Area</b>	Cell Biology
<b>Target Names</b>	PSMA1

## Image



### Western Blot

Positive WB detected in: HeLa whole cell lysate, PC-3 whole cell lysate, K562 whole cell lysate

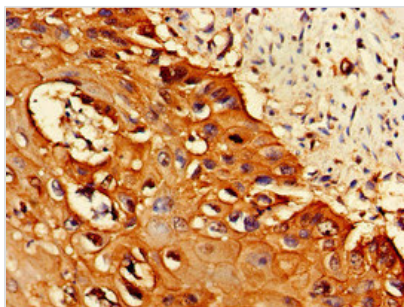
All lanes: PSMA1 antibody at 3.4µg/ml

Secondary

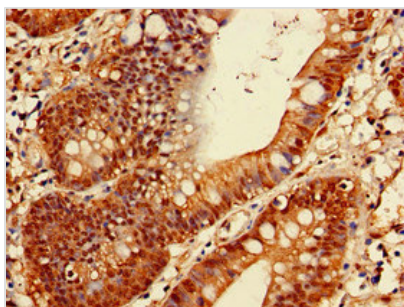
Goat polyclonal to rabbit IgG at 1/50000 dilution

Predicted band size: 30, 31 kDa

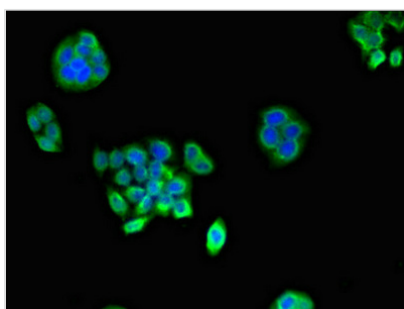
Observed band size: 30 kDa



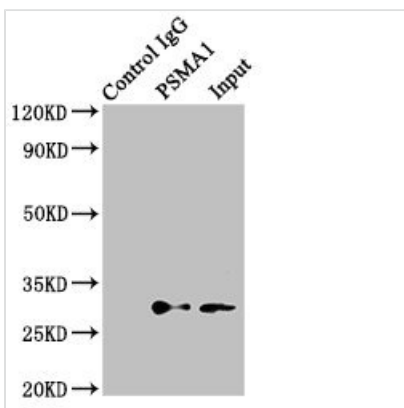
Immunohistochemistry of paraffin-embedded human cervical cancer using CSB-PA018865LA01HU at dilution of 1:100



Immunohistochemistry of paraffin-embedded human colon cancer using CSB-PA018865LA01HU at dilution of 1:100



Immunofluorescent analysis of PC-3 cells using CSB-PA018865LA01HU at dilution of 1:100 and Alexa Fluor 488-conjugated AffiniPure Goat Anti-Rabbit IgG(H+L)



Immunoprecipitating PSMA1 in K562 whole cell lysate  
 Lane 1: Rabbit control IgG (1 $\mu$ g) instead of CSB-PA018865LA01HU in K562 whole cell lysate. For western blotting, a HRP-conjugated light chain specific antibody was used as the secondary antibody (1/50000)  
 Lane 2: CSB-PA018865LA01HU (8 $\mu$ g) + K562 whole cell lysate (500 $\mu$ g)  
 Lane 3: K562 whole cell lysate (10 $\mu$ g)

**Usage**

For Research Use Only. Not for use in diagnostic or therapeutic procedures.