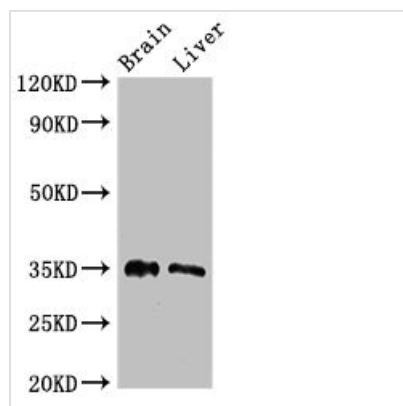




PTF1A Antibody

Product Code	CSB-PA018967LA01HU
Storage	Upon receipt, store at -20°C or -80°C. Avoid repeated freeze.
Uniprot No.	Q7RTS3
Immunogen	Recombinant Human Pancreas transcription factor 1 subunit alpha protein (224-325AA)
Raised In	Rabbit
Species Reactivity	Human, Mouse, Rat
Tested Applications	ELISA, WB, IHC, IF; Recommended dilution: WB:1:500-1:5000, IHC:1:20-1:200, IF:1:50-1:200
Form	Liquid
Conjugate	Non-conjugated
Storage Buffer	Preservative: 0.03% Proclin 300 Constituents: 50% Glycerol, 0.01M PBS, pH 7.4
Purification Method	>95%, Protein G purified
Isotype	IgG
Clonality	Polyclonal
Alias	Pancreas transcription factor 1 subunit alpha (Class A basic helix-loop-helix protein 29) (bHLHa29) (Pancreas-specific transcription factor 1a) (bHLH transcription factor p48) (p48 DNA-binding subunit of transcription factor PTF1) (PTF1-p48), PTF1A, BHLHA29 PTF1P48
Immunogen Species	Homo sapiens (Human)
Research Area	Neuroscience
Target Names	PTF1A

Image



Western Blot

Positive WB detected in: Mouse brain tissue, Rat liver tissue

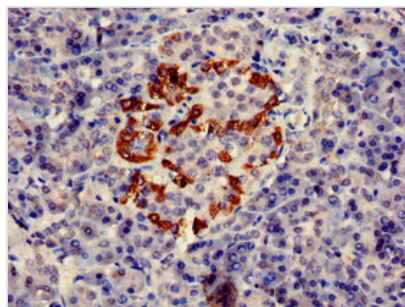
All lanes: PTF1A antibody at 2.7µg/ml

Secondary

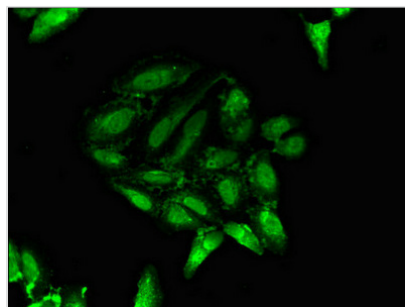
Goat polyclonal to rabbit IgG at 1/50000 dilution

Predicted band size: 35 kDa

Observed band size: 35 kDa



Immunohistochemistry of paraffin-embedded human pancreatic tissue using CSB-PA018967LA01HU at dilution of 1:100



Immunofluorescent analysis of HeLa cells using CSB-PA018967LA01HU at dilution of 1:100 and Alexa Fluor 488-conjugated AffiniPure Goat Anti-Rabbit IgG(H+L)

Usage

For Research Use Only. Not for use in diagnostic or therapeutic procedures.