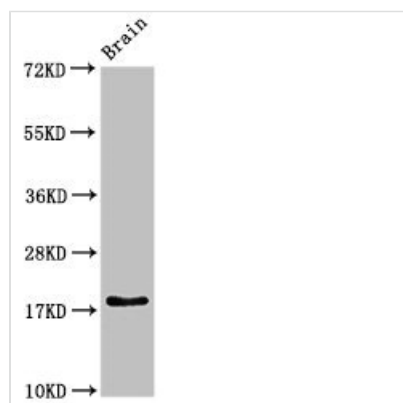




RPL23A Antibody

Product Code	CSB-PA020187LA01HU
Storage	Upon receipt, store at -20°C or -80°C. Avoid repeated freeze.
Uniprot No.	P62750
Immunogen	Recombinant Human 60S ribosomal protein L23a protein (1-92AA)
Raised In	Rabbit
Species Reactivity	Human, Rat
Tested Applications	ELISA, WB, IHC, IF; Recommended dilution: WB:1:500-1:5000, IHC:1:20-1:200, IF:1:50-1:200
Form	Liquid
Conjugate	Non-conjugated
Storage Buffer	Preservative: 0.03% Proclin 300 Constituents: 50% Glycerol, 0.01M PBS, pH 7.4
Purification Method	>95%, Protein G purified
Isotype	IgG
Clonality	Polyclonal
Alias	60S ribosomal protein L23a (Large ribosomal subunit protein uL23), RPL23A
Immunogen Species	Homo sapiens (Human)
Research Area	Epigenetics and Nuclear Signaling
Target Names	RPL23A

Image



Western Blot

Positive WB detected in: Rat brain tissue

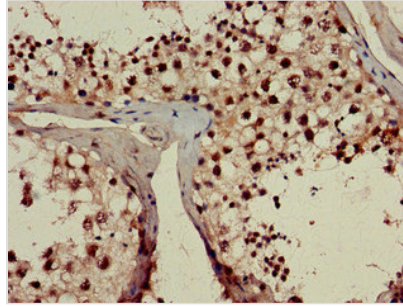
All lanes: RPL23A antibody at 3µg/ml

Secondary

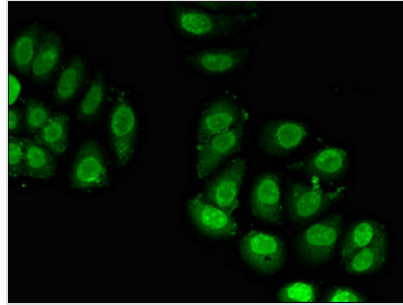
Goat polyclonal to rabbit IgG at 1/50000 dilution

Predicted band size: 18 kDa

Observed band size: 18 kDa



Immunohistochemistry of paraffin-embedded human testis tissue using CSB-PA020187LA01HU at dilution of 1:100



Immunofluorescent analysis of A549 cells using CSB-PA020187LA01HU at dilution of 1:100 and Alexa Fluor 488-conjugated AffiniPure Goat Anti-Rabbit IgG(H+L)

Usage

For Research Use Only. Not for use in diagnostic or therapeutic procedures.