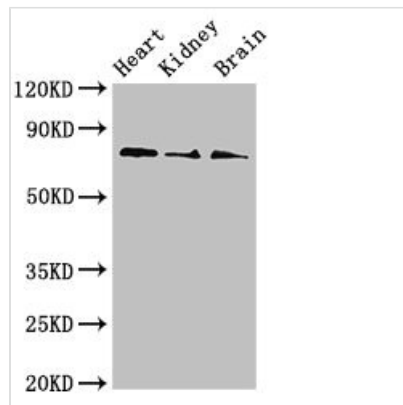




SLC5A1 Antibody

Product Code	CSB-PA021675LA01HU
Storage	Upon receipt, store at -20°C or -80°C. Avoid repeated freeze.
Uniprot No.	P13866
Immunogen	Recombinant Human Sodium/glucose cotransporter 1 protein (564-643AA)
Raised In	Rabbit
Species Reactivity	Human, Mouse
Tested Applications	ELISA, WB, IHC, IF; Recommended dilution: WB:1:500-1:5000, IHC:1:20-1:200, IF:1:50-1:200
Form	Liquid
Conjugate	Non-conjugated
Storage Buffer	Preservative: 0.03% Proclin 300 Constituents: 50% Glycerol, 0.01M PBS, pH 7.4
Purification Method	>95%, Protein G purified
Isotype	IgG
Clonality	Polyclonal
Alias	Sodium/glucose cotransporter 1 (Na(+)/glucose cotransporter 1) (High affinity sodium-glucose cotransporter) (Solute carrier family 5 member 1), SLC5A1, NAGT SGLT1
Immunogen Species	Homo sapiens (Human)
Research Area	Signal Transduction
Target Names	SLC5A1

Image



Western Blot

Positive WB detected in: Mouse heart tissue, Mouse kidney tissue, Mouse brain tissue

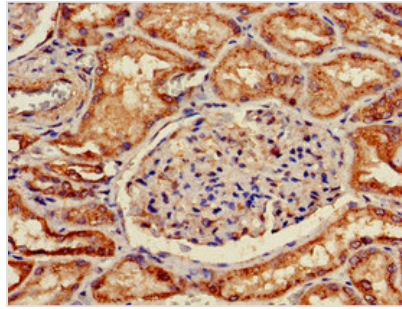
All lanes: SLC5A1 antibody at 4μg/ml

Secondary

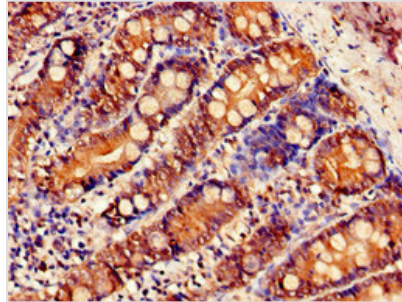
Goat polyclonal to rabbit IgG at 1/50000 dilution

Predicted band size: 74, 61 kDa

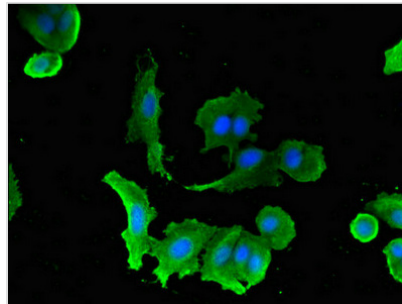
Observed band size: 74 kDa



Immunohistochemistry of paraffin-embedded human kidney tissue using CSB-PA021675LA01HU at dilution of 1:100



Immunohistochemistry of paraffin-embedded human small intestine tissue using CSB-PA021675LA01HU at dilution of 1:100



Immunofluorescent analysis of MCF-7 cells using CSB-PA021675LA01HU at dilution of 1:100 and Alexa Fluor 488-conjugated AffiniPure Goat Anti-Rabbit IgG(H+L)