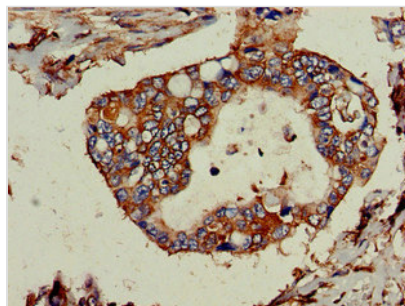




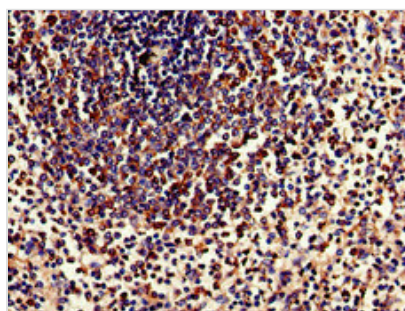
# TPD52L2 Antibody

<b>Product Code</b>	CSB-PA024098LA01HU
<b>Storage</b>	Upon receipt, store at -20°C or -80°C. Avoid repeated freeze.
<b>Uniprot No.</b>	O43399
<b>Immunogen</b>	Recombinant Human Tumor protein D54 protein (1-206AA)
<b>Raised In</b>	Rabbit
<b>Species Reactivity</b>	Human, Mouse
<b>Tested Applications</b>	ELISA, WB, IHC, IF; Recommended dilution: WB:1:200-1:5000, IHC:1:20-1:200, IF:1:50-1:200
<b>Form</b>	Liquid
<b>Conjugate</b>	Non-conjugated
<b>Storage Buffer</b>	Preservative: 0.03% Proclin 300 Constituents: 50% Glycerol, 0.01M PBS, pH 7.4
<b>Purification Method</b>	>95%, Protein G purified
<b>Isotype</b>	IgG
<b>Clonality</b>	Polyclonal
<b>Alias</b>	Tumor protein D54 (hD54) (Tumor protein D52-like 2), TPD52L2
<b>Immunogen Species</b>	Homo sapiens (Human)
<b>Research Area</b>	Cell Biology
<b>Target Names</b>	TPD52L2

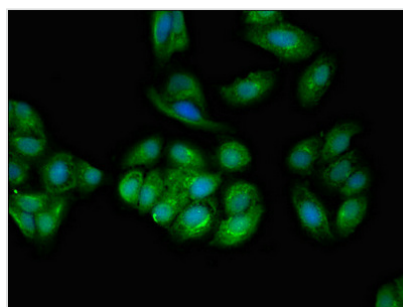
## Image



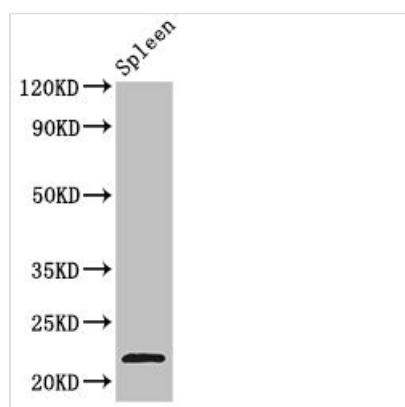
Immunohistochemistry of paraffin-embedded human pancreatic cancer using CSB-PA024098LA01HU at dilution of 1:100



Immunohistochemistry of paraffin-embedded human spleen tissue using CSB-PA024098LA01HU at dilution of 1:100



Immunofluorescent analysis of HepG2 cells using CSB-PA024098LA01HU at dilution of 1:100 and Alexa Fluor 488-conjugated AffiniPure Goat Anti-Rabbit IgG(H+L)

**Western Blot**

Positive WB detected in: Mouse spleen tissue

All lanes: TPD52L2 antibody at 3 $\mu$ g/ml

Secondary

Goat polyclonal to rabbit IgG at 1/50000 dilution

Predicted band size: 23, 20, 22, 24, 18, 25 kDa

Observed band size: 23 kDa

**Usage**

For Research Use Only. Not for use in diagnostic or therapeutic procedures.